

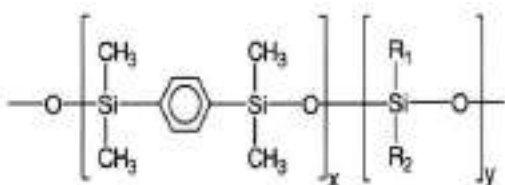


SAPIENS-X5MS

SAPIENS-X5MS

Polysiloxane containing p-silphenylene

- Ideal column for semivolatle compounds.
- selectivity similar to Meta.X5
- New generation of column incorporates arylene groups in the polymer structure to provide improved thermal stability, reduced column bleed and optimal resolution for aromatic compounds.
- Stringent quality control test guarantees total and optimal signal/ noise ratio for the more active compounds such as 2,4-dinitropherol, 4-nitroaniline and pentachlorophenol that normally suffer adsorption problems.



Structure of Polysiloxane containing p-silphenylene

SAPIENS-X5MS Equivalent Phase

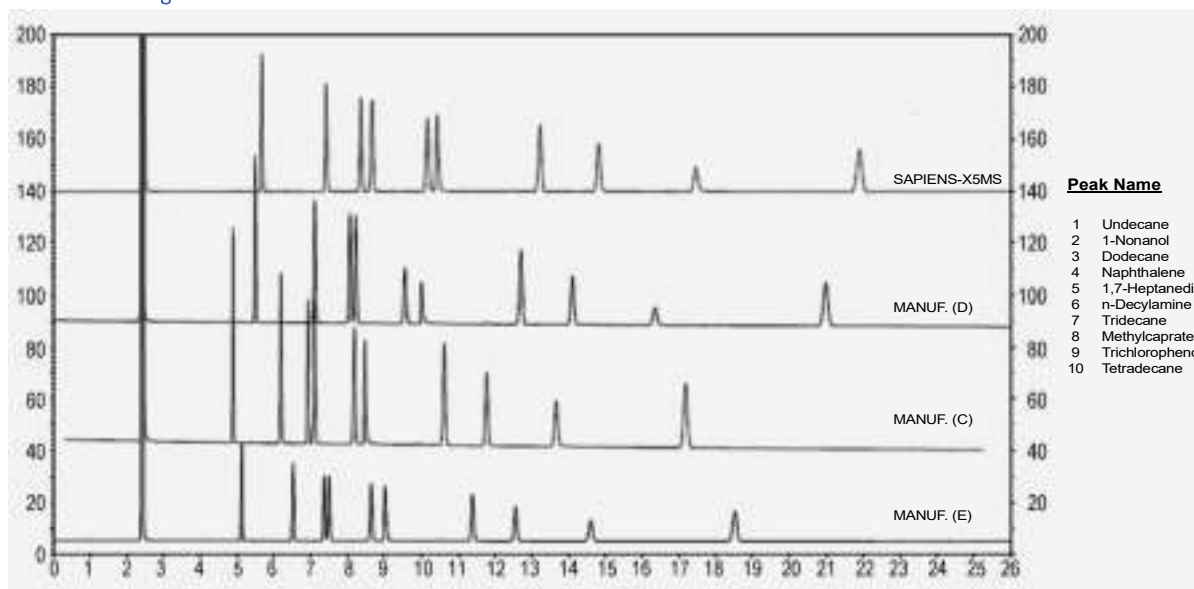
Agilent: DB-5MS UI, VF-5MS
Restek: Rxi-5Sil MS
Phenomenex: ZB-5Plus
SGE: BPX5
Sigma-Aldrich: SLB-5MS
Macherey-Nagel: OPTIMA-5MS Accent

SAPIENS-X5MS

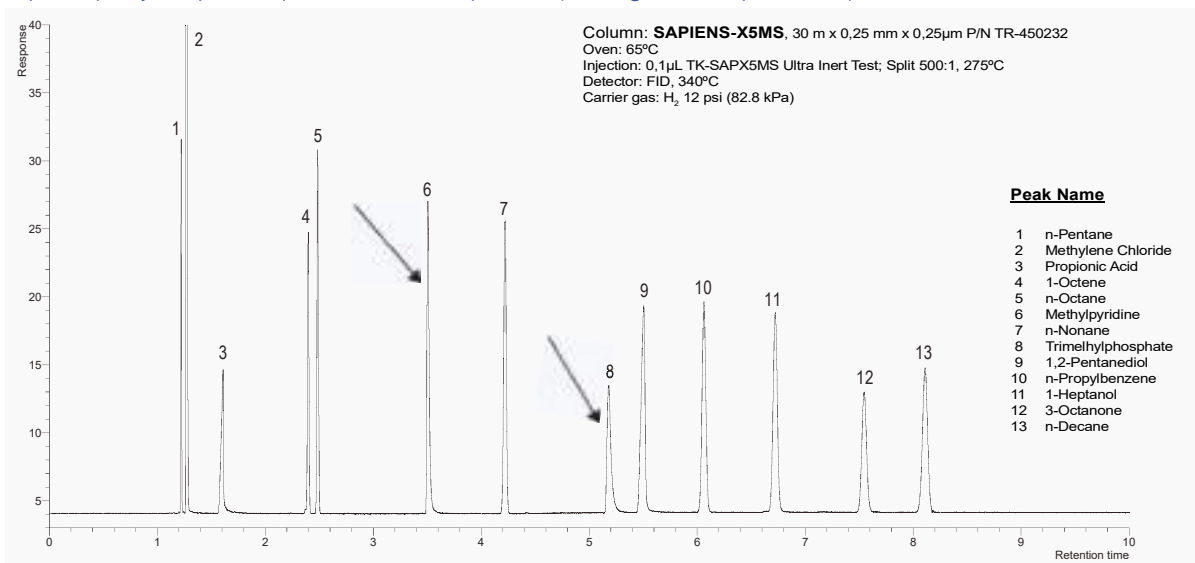
Internal Diam.(mm)	Length (m)	Film Thickness (µm)	Temp limits (°C)	Part. N°. (P/N)
0,10	10	0,10	-60 to 325/350	TR-450141
	20	0,10	-60 to 325/350	TR-450181
0,18	20	0,18	-60 to 325/350	TR-450984
	20	0,36	-60 to 325/350	TR-453484
0,25	15	0,25	-60 to 325/350	TR-450212
	15	1,00	-60 to 325/350	TR-451012
	25	0,25	-60 to 325/350	TR-450222
	30	0,25	-60 to 325/350	TR-450232
	30	0,50	-60 to 325/350	TR-450532
	30	1,00	-60 to 325/350	TR-451032
	50	0,25	-60 to 325/350	TR-450252
0,32	60	0,25	-60 to 325/350	TR-450262
	60	1,00	-60 to 325/350	TR-451062
	15	0,25	-60 to 325/350	TR-450213
	30	0,25	-60 to 325/350	TR-450233
	30	0,50	-60 to 325/350	TR-450533
	30	1,00	-60 to 325/350	TR-451033
	60	1,00	-60 to 325/350	TR-451063

SAPIENS-X5MS: Classical Inertness Test comparison vs major manufacturers

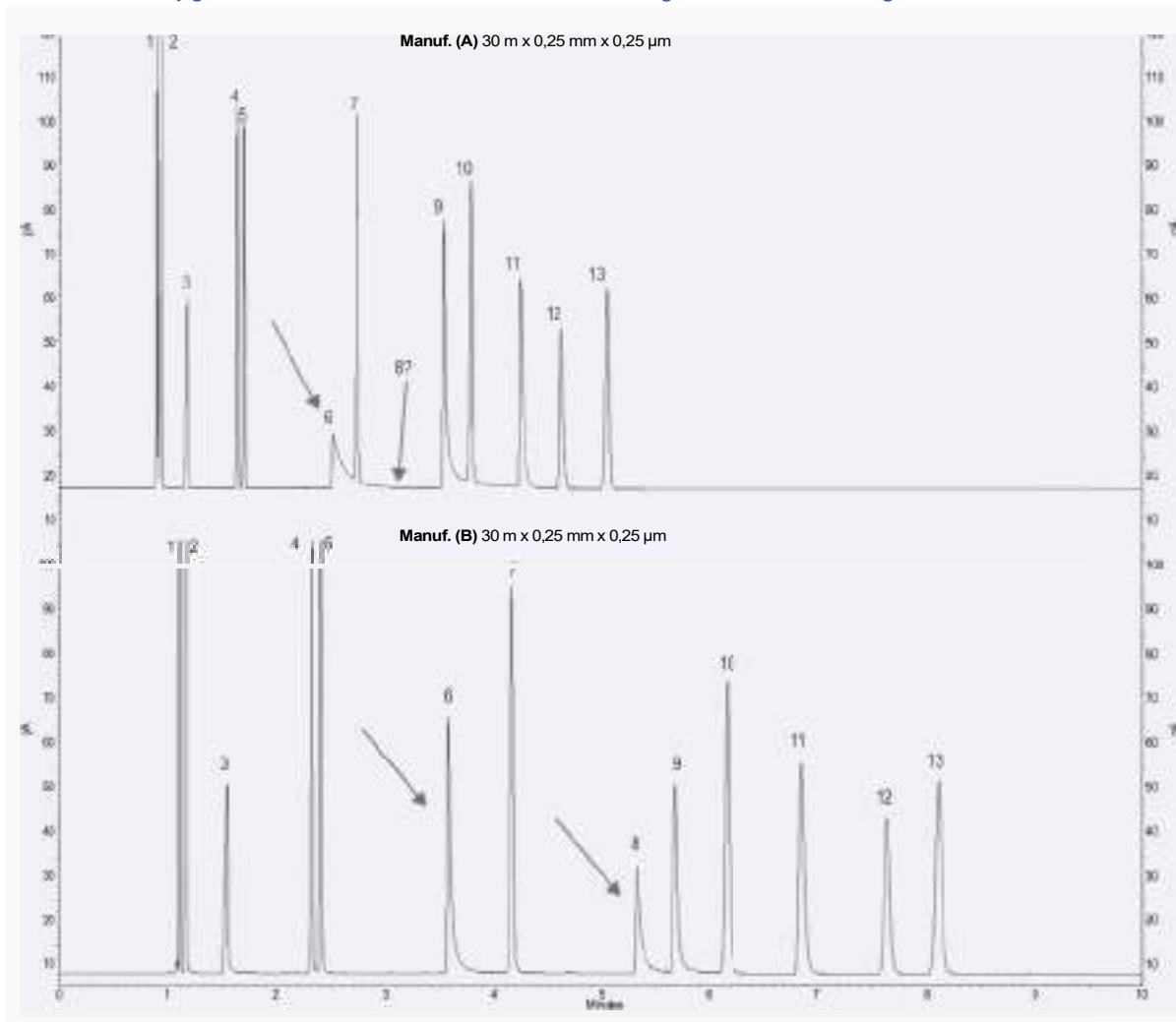
All columns are good

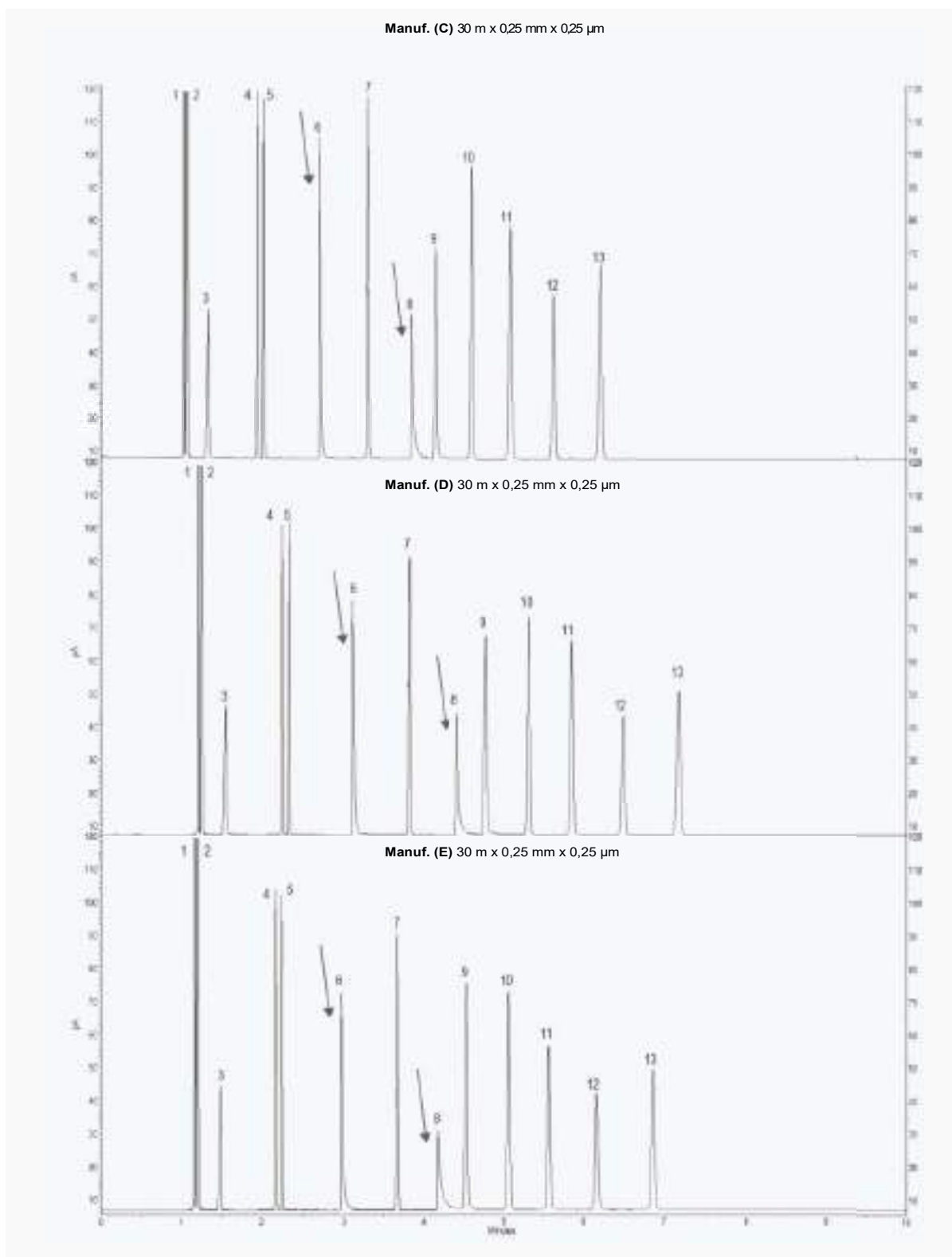


SAPIENS-X5MS: Ultra Inert Test * Performance against major ultra inert column manufacturers
 Superior quality and peak shape for all active compounds *(J.Luong et al. J.Sep.Sci. 2007)



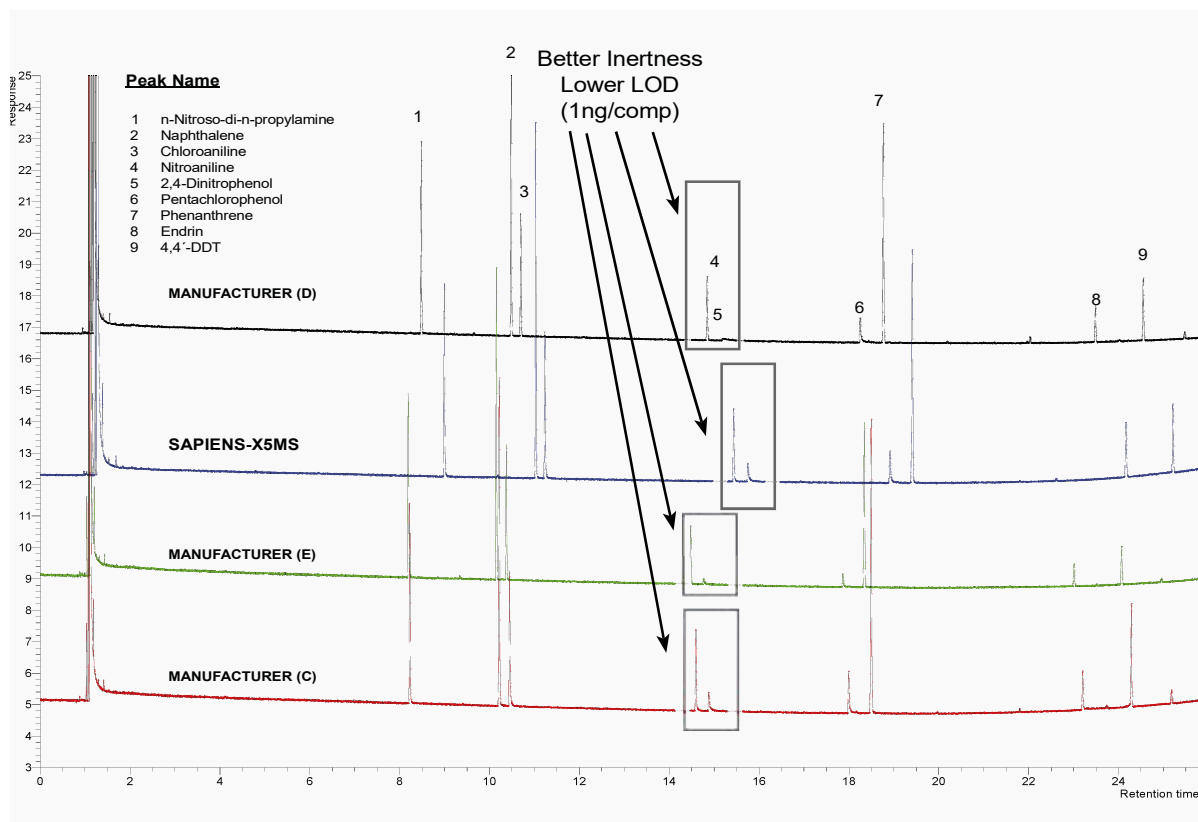
All columns are very good with a classical test but not all are excellent against a more demanding test





* Columns used for comparison are from: Agilent, Phenomenex, Supelco, SGE and Restek (listed in random order)

SAPIENS-X5MS: Alinines, Phenols and Pesticides test Performance against major ultra inert column manufacturers
Improved performance for active compounds



SAPIENS-X5MS: Epichlorohydrin GC analysis in drinking water with SAPIENS-X5MS column

