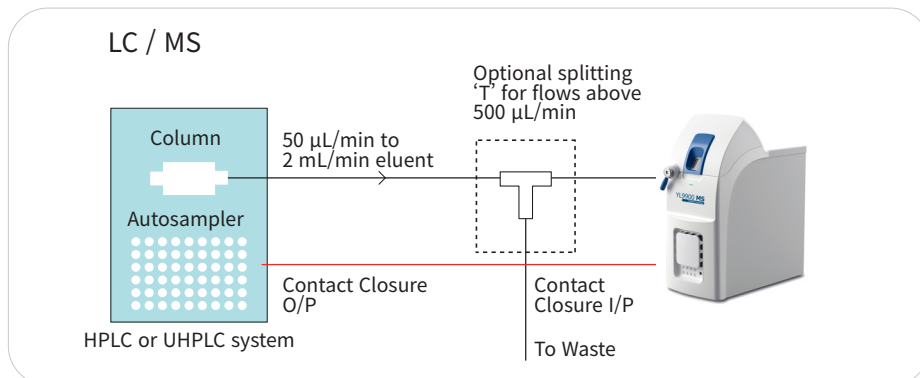


# YL9900L / YL9900S LC/MS

YL9900 LC/MS quickly provides essential information and faster optimization of reaction conditions and reduces the burden on open-access platforms. Modern organic labs have become automated; faster and more critical reactions require co-located versatile analytics ; YL9900 LC/MS solves this at an affordable price.

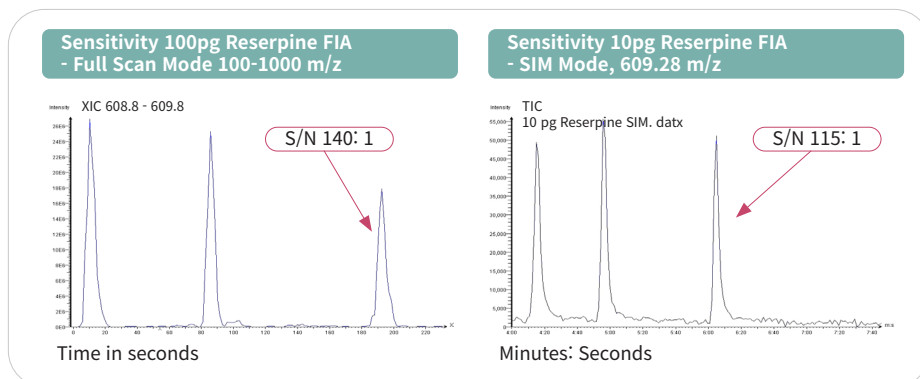
## LC / MS

YL9900 LC/MS can be coupled with existing ChroZen UHPLC or YL9100 Plus HPLC to provide mass information of each single compound.



## Sensitivity

You can overcome poor resolution with UV detector or other detectors. Selective ion mode gives you a high selectivity for all individual chemicals.



- Positive and negative ions analysis
- ESI / APCI (switchable with minimal effort, optional installation)
- The first mass spec to fit in a fume hood
- Easy access to the YL9900 MS:  
10 connectors located on the front of the instrument  
(8 I/O connectors, USB port and computer connector)
- An easy interface with powerful software  
- Mass Express™, Data Express™
- Full control by YL-Clarity with MS Extension

