

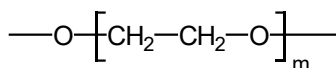


Teknokroma Capillary Columns

TRB-WAX

100% polyethylene glycol, bonded and cross-linked phase.

- 100% Polyethylene glycol (PEG)
- High polarity column
- Wide range temperatures and high thermal stability (270° C)
- Ideal for separating alcohols, aldehydes, ketones and aromatic isomers (BTX)



Structure of Polyethylene glycol

TRB-WAX Equivalent Phase

Agilent: HP-20M, INNOWAX, DB-WAX, DBWAXetr, CP-WAX 52CB

Supelco: SUPELCOWAX-10, Carbowax 20M

Restek: STABILWAX

SGE: BP-20

TRB-WAX Test

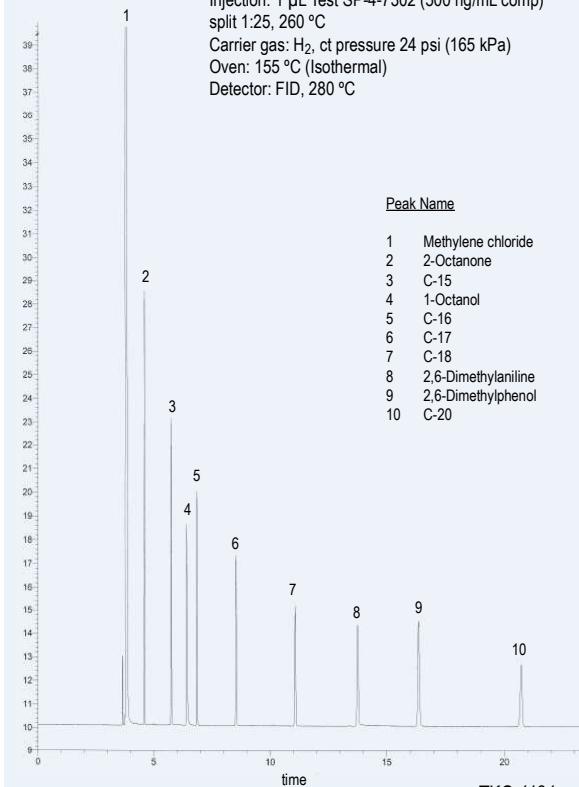
Column: **TRB-WAX**, 60m x 0.25mm x 0.25 µm, P/N TR-140262

Injection: 1 µL Test SP-4-7302 (500 ng/mL comp) split 1:25, 260 °C

Carrier gas: H₂, ct pressure 24 psi (165 kPa)

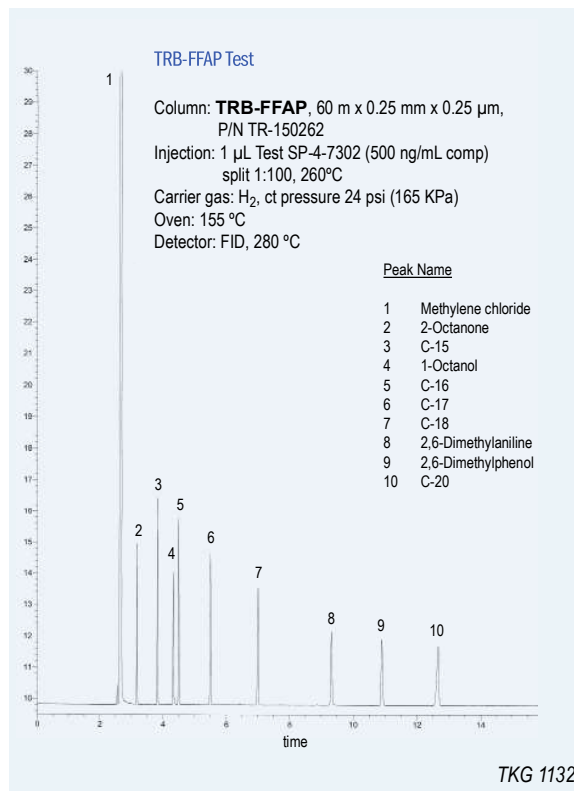
Oven: 155 °C (Isothermal)

Detector: FID, 280 °C



TRB-WAX

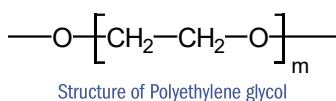
Internal Diam. (mm)	Length (m)		Film Thickness (µm)	Temp limits (°C)	Part. N°. (P/N)	
	Internal	External				
0,10	10	10	0,10	40 to 260/270	TR-140141	
		10	0,20	40 to 260/270	TR-142141	
	20	10	0,10	40 to 260/270	TR-140181	
		20	0,20	40 to 260/270	TR-142181	
0,20	15	15	0,20	40 to 260/270	TR-142119	
		15	0,40	40 to 260/270	TR-140419	
	30	30	0,20	40 to 260/270	TR-142139	
		30	0,40	40 to 260/270	TR-140439	
	60	60	0,20	40 to 260/270	TR-142169	
		60	0,40	40 to 260/270	TR-140469	
	0,25	15	15	0,10	40 to 260/270	TR-140112
			15	0,25	40 to 260/270	TR-140212
15		15	0,50	40 to 260/270	TR-140512	
		30	0,10	40 to 260/270	TR-140132	
30		30	0,25	40 to 260/270	TR-140232	
		30	0,50	40 to 260/270	TR-140532	
30		30	1,00	40 to 260/270	TR-141032	
		60	0,10	40 to 260/270	TR-140162	
60		60	0,25	40 to 260/270	TR-140262	
		60	0,50	40 to 260/270	TR-140562	
0,32	15	15	0,10	40 to 260/270	TR-140113	
		15	0,25	40 to 260/270	TR-140213	
	15	15	0,50	40 to 260/270	TR-140513	
		30	0,10	40 to 260/270	TR-140133	
	30	30	0,25	40 to 260/270	TR-140233	
		30	0,50	40 to 260/270	TR-140533	
	50	50	1,20	40 to 230/240	TR-141253	
		60	0,10	40 to 260/270	TR-140163	
	60	60	0,25	40 to 260/270	TR-140263	
		60	0,50	40 to 260/270	TR-140563	
60	60	1,00	40 to 230/240	TR-141063		
	60	1,20	40 to 230/240	TR-141263		
100	100	1,00	40 to 230/240	TR-141093		
	0,53	10	10	1,00	40 to 240/250	TR-141045
15			1,00	40 to 240/250	TR-141015	
30		30	1,00	40 to 240/250	TR-141035	
		30	1,33	40 to 240/250	TR-141735	
30	30	2,00	40 to 240/250	TR-142035		
	60	60	1,00	40 to 240/250	TR-141065	
60		2,00	40 to 240/250	TR-142065		



TRB-FFAP

Polyethylene glycol esterified with nitroterephthalic acid, bonded and crosslinked phase.

- 100% Polyethylene glycol (PEG) esterified with nitroterephthalic acid
- Ideal for analysis of free acids (without derivatization), phenols and glycols
- High thermal stability (250°C)



TRB-FFAP Equivalent Phase

Agilent: HP-FFAP, DB-FFAP, CP-WAX 58 CB
Supelco: NUKOL, SP-1000
Restek: STABILWAX-DA
SGE: BP-21
Quadrex: 007-FFAP

TRB-FFAP

Internal Length	Film	Temp	Part.
Diam. (mm)	Thickness (µm)	limits (°C)	N°. (P/N)
0,10	10	0,10	40 to 240/250 TR-150141
	10	0,20	40 to 240/250 TR-152141
	15	0,10	40 to 240/250 TR-150111
	20	0,10	40 to 240/250 TR-150181
0,20	15	0,30	40 to 240/250 TR-152119
	30	0,30	40 to 240/250 TR-152139
	60	0,30	40 to 240/250 TR-152169
0,25	15	0,25	40 to 240/250 TR-150212
	30	0,25	40 to 240/250 TR-150232
	60	0,25	40 to 240/250 TR-150262
0,32	15	0,25	40 to 240/250 TR-150213
	15	0,50	40 to 240/250 TR-150513
	30	0,25	40 to 240/250 TR-150233
	30	0,50	40 to 240/250 TR-150533
	60	0,25	40 to 240/250 TR-150263
	60	0,50	40 to 240/250 TR-150563
0,53	15	0,50	40 to 240/250 TR-150515
	15	1,00	40 to 230/240 TR-151015
	30	0,50	40 to 240/250 TR-150535
	30	1,00	40 to 230/240 TR-151035
	60	0,50	40 to 240/250 TR-150565
	60	1,00	40 to 230/240 TR-151065