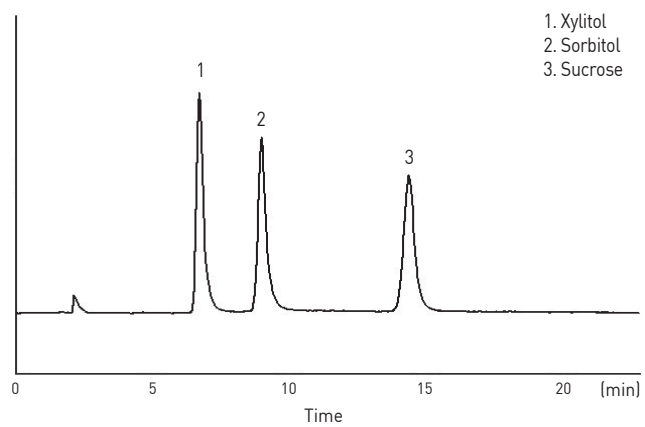


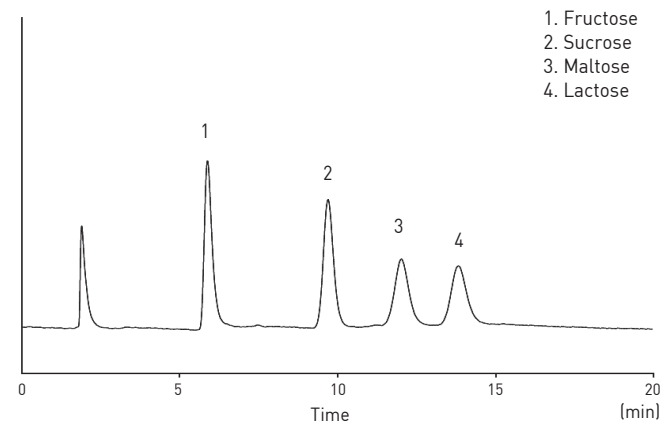
■ Xylitol, Sorbitol and Sucrose

- Mobile phase : ACN:Water=80:20 (Isocratic mode)
- Flow rate : 1.5 ml/min
- Column oven : 35 °C
- Detector : ELSD – Range ¼, gas 2 L/min, Temp 60 °C
- Column : Carbohydrate (4.6 mm, 250 mm, 5 µm)
- Injection volume : 20 µl sample loop



■ Sugars (Fructose, Sucrose, Maltose, Lactose)

- Mobile phase : ACN:Water=75:25 (Isocratic mode)
- Flow rate : 1.5 ml/min
- Column oven : 35 °C
- Detector : ELSD – Range ½, gas 1.5 L/min, Temp 60 °C
- Column : Carbohydrate (4.6 mm, 250 mm, 5 µm)
- Injection volumn : 20 µl sample loop



■ Sugars

- Mobile phase : ACN:Water=75:25 (Isocratic mode)
- Flow rate : 1 ml/min
- Column oven : 40 °C
- Detector : ELSD (SC 43 °C /DT 60 °C, Cal 50, Filter=9)
- Column : Shodex NH2 (4.6 mm, 250 mm, 5 µm)
- Injection volumn : 20 µl sample loop

