



**SAPIENS-624MS**

## SAPIENS-624MS

**Silphenylene phase equivalent to 94% methyl-6% cyanopropylphenyl, polysiloxane bonded and cross-linked**

- Intermediate polarity
- Highly inert, excellent chromatographic performance for acidic, basic and polar compounds
- Low bleed column especially design for superior thermal stability up to 280°C
- Suitable for environmental analysis of organic volatile compounds and residual solvents in pharmaceutical products
- Meets specifications of USP <467> and PhEur 2.4.24
- Phase equivalent to USP G43

### SAPIENS-624MS Equivalent Phase G43

**Agilent:** DB-624UI, VF-624MS, VF-1301MS, DB-Select 624UI for <467>

**Restek:** Rxi-624SilMS

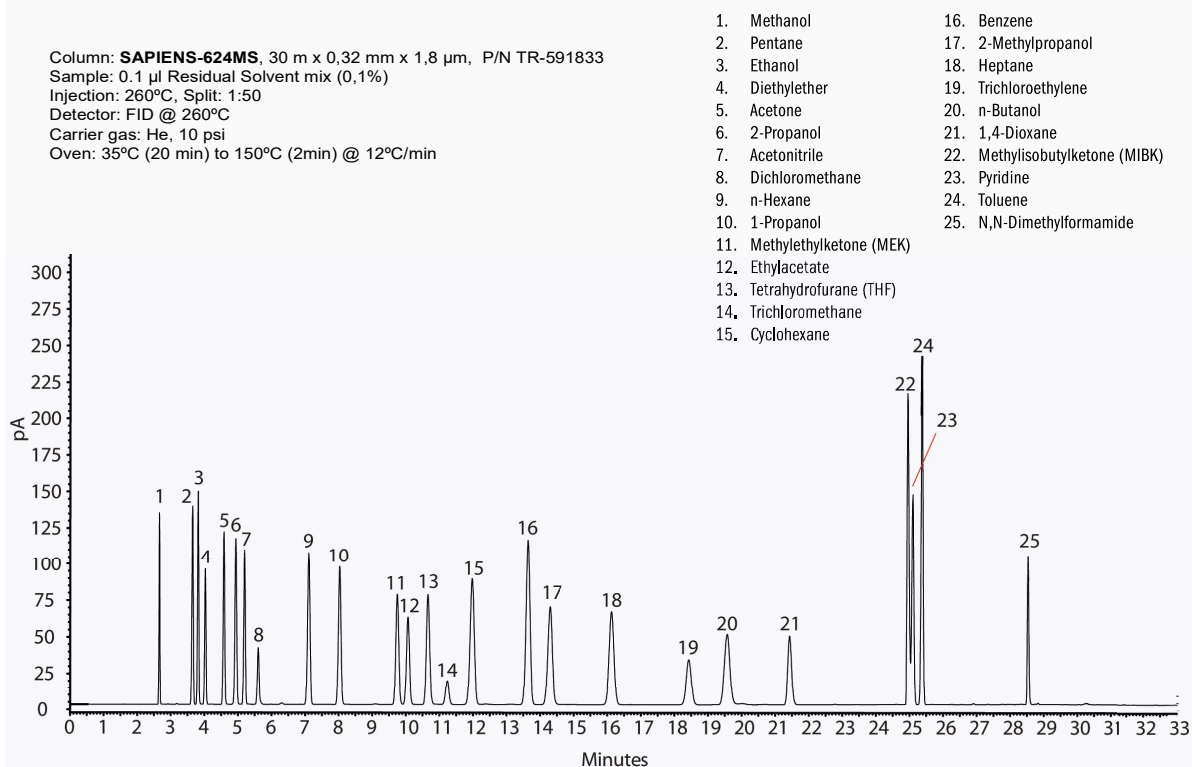
**SGE:** BPX-Volatile

### SAPIENS-624MS

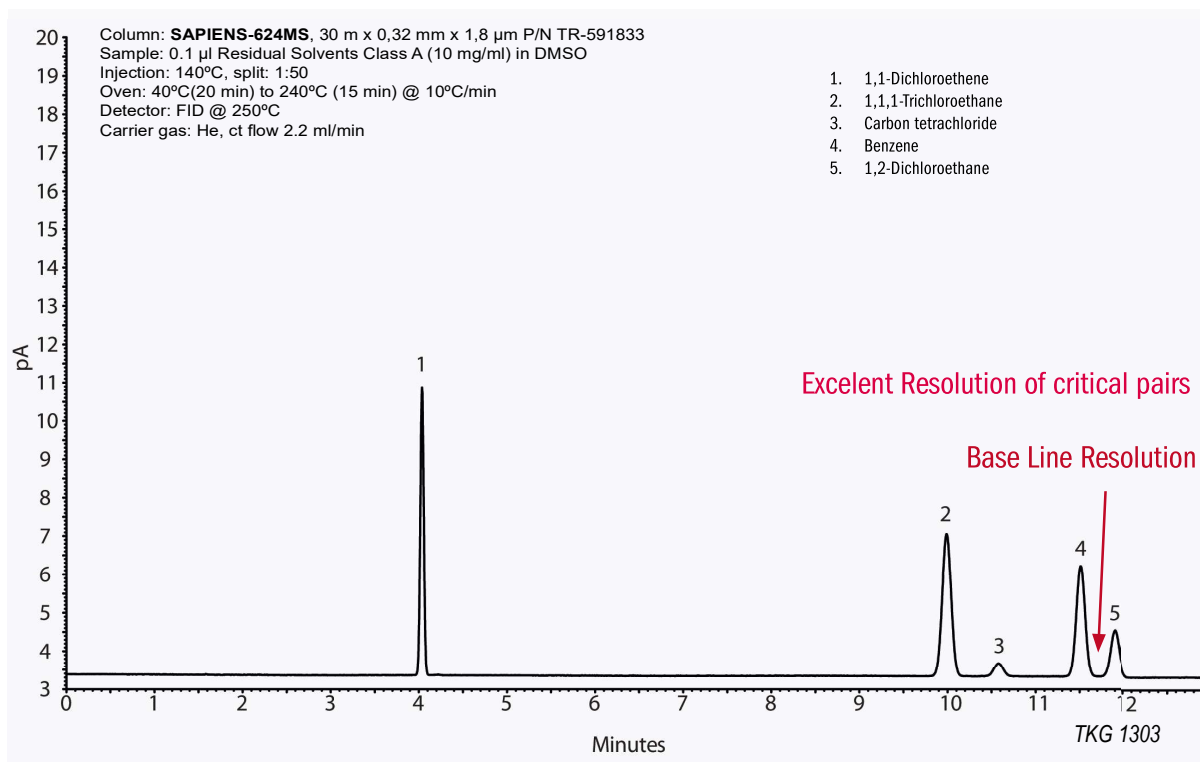
Internal Diam. (mm)	Length (m)	Film Thickness (µm)	Temp limits (°C)	Part. N°. (P/N)
0,18	20	1,00	-20 to 260/280	TR-591084
0,20	25	1,12	-20 to 260/280	TR-591129
0,25	30	1,40	-20 to 260/280	TR-591432
	60	1,40	-20 to 260/280	TR-591462
0,32	30	1,80	-20 to 260/280	TR-591833
	60	1,80	-20 to 260/280	TR-591863
0,53	30	3,00	-20 to 260/280	TR-593035
	60	3,00	-20 to 260/280	TR-593065
	75	3,00	-20 to 260/280	TR-593075
105	3,00	-20 to 260/280	TR-5930K5	

### SAPIENS-624MS: Residual Solvents

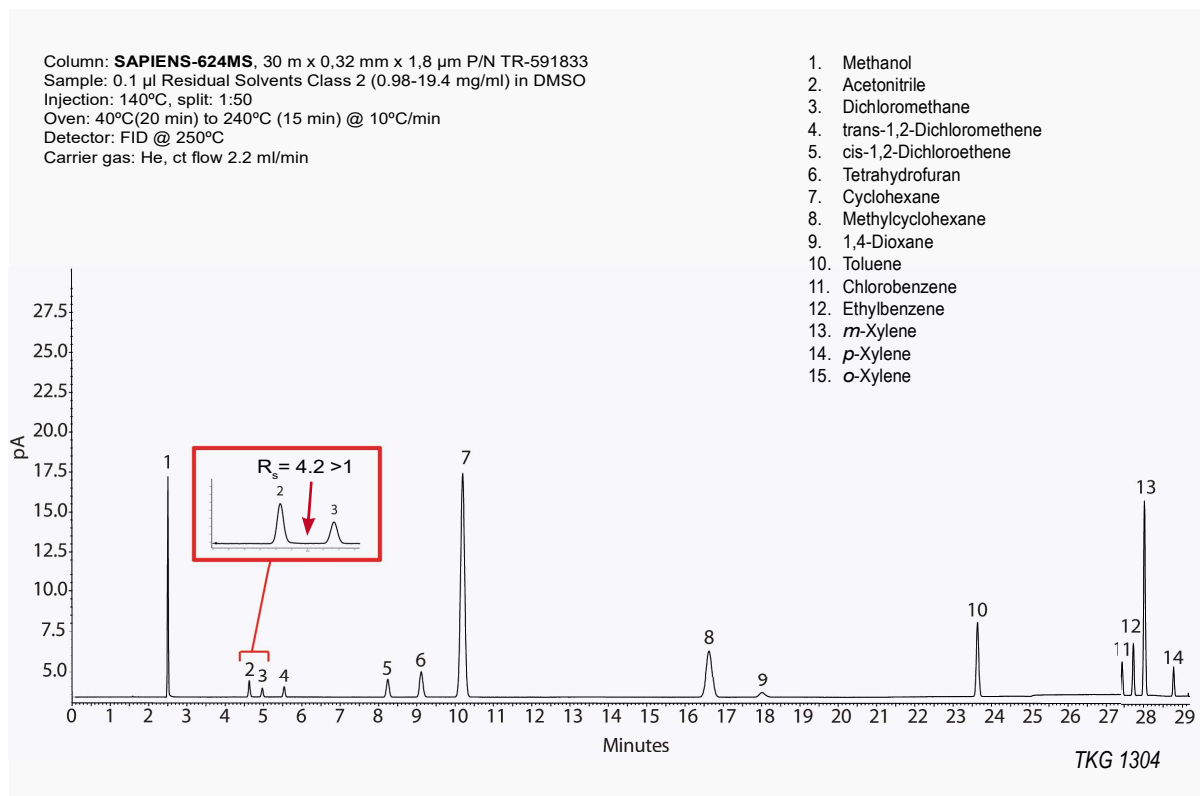
Column: **SAPIENS-624MS**, 30 m x 0,32 mm x 1,8 µm, P/N TR-591833  
 Sample: 0.1 µl Residual Solvent mix (0,1%)  
 Injection: 260°C, Split: 1:50  
 Detector: FID @ 260°C  
 Carrier gas: He, 10 psi  
 Oven: 35°C (20 min) to 150°C (2min) @ 12°C/min



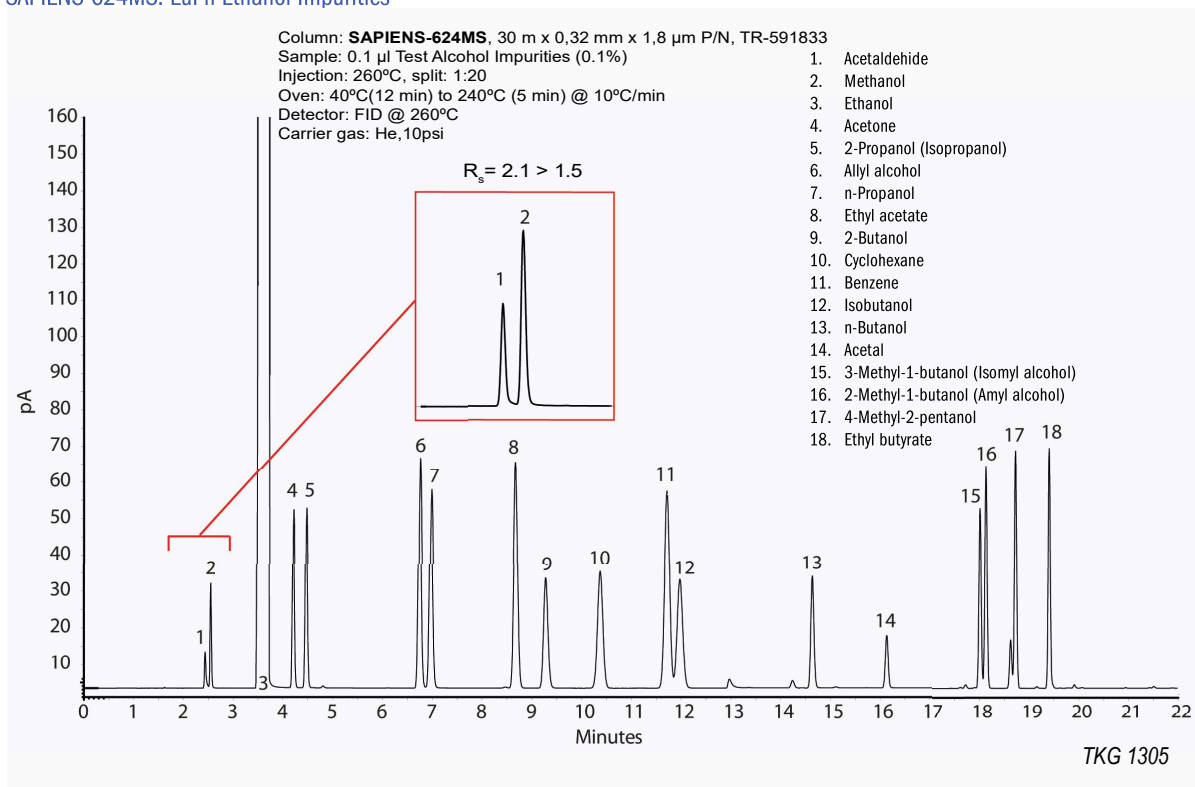
### SAPIENS-624MS: USP <467> Residual Solvents Class 1



### SAPIENS-624MS: USP <467> Residual Solvents Class 2



### SAPIENS-624MS: EuPh Ethanol Impurities



### SAPIENS-624MS: USP Glycerin monograph; Related compounds System Suitability Solution

