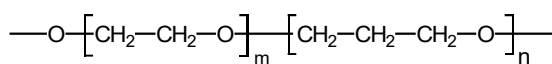


## TRB-PAG

### 50% Polyethylene - 50% polypropylene glycol, bonded and crosslinked phase.

- 50% Polyethylene - 50% polypropylene glycol
- Phase polarity slightly lower than TRB-WAX due to the inclusion of groups of propylene oxide
- Polarity similar to UCON phase



Structure of Poly (ethylenepropylene) glycol

### TRB-PAG Equivalent Phase

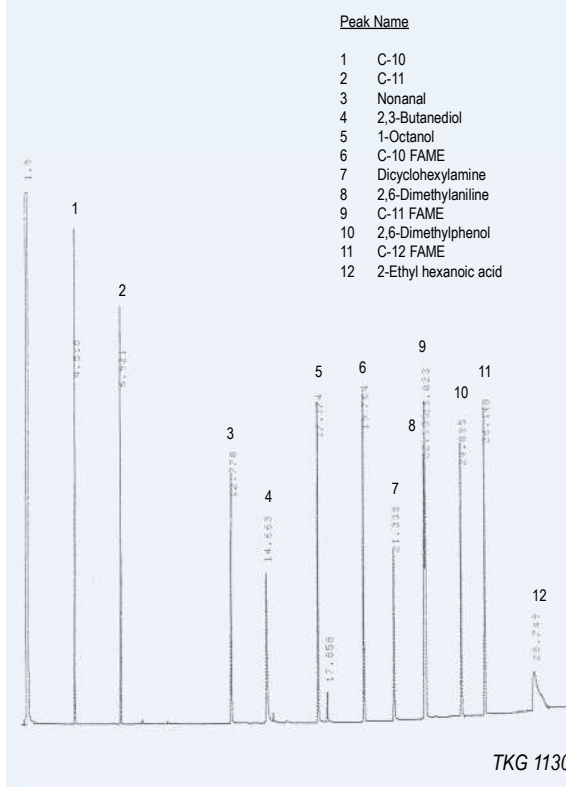
**Supelco:** PAG

### TRB-PAG

Internal Diam. (mm)	Length (m)	Film Thickness (µm)	Temp limits (°C)	Part. N°. (P/N)
0,25	15	0,25	30 to 220/230	TR-550212
	30	0,25	30 to 220/230	TR-550232
	60	0,25	30 to 220/230	TR-550262
0,32	15	0,25	30 to 220/230	TR-550213
	30	0,25	30 to 220/230	TR-550233
	60	0,25	30 to 220/230	TR-550263
0,53	15	0,50	30 to 220/230	TR-550515
	30	0,50	30 to 220/230	TR-550535
	60	0,50	30 to 220/230	TR-550565

### TRB-PAG Grob Test

Column: **TRB-PAG**, 30 m x 0.25 mm x 0.25 µm, P/N TR-550232  
 Injection: 1 µL Test Grob, split 1:25, 260 °C  
 Carrier gas: H<sub>2</sub>, ct pressure 11 psi (75.8 kPa)  
 Oven: 40 °C to 230 °C (5 min) @ 6 °C/min  
 Detector: FID, 260 °C

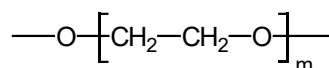


## SupraWAX-280

### Column totally equivalent to the SUPELCOWAX™ 10. Based in the popular phase Carbowax 20M.

Extended use for the analysis of methyl esters of fatty acids (FAMEs) and analysis of solvents, fragrances, alcohols and aromatic compounds in the alimentary and flavor and fragrance industry.

- 100 % Polyethylene glycol (PEG), bonded cross-linked phase
- Column of high polarity
- Phase practically equivalent to the USP G16 phase
- Ample range of operating temperatures and high thermal stability (35°C-280°C)
- Compatible with water and methanol injections, providing that these solvents must be completely vaporized when they enter into the column.
- Reproducibility among columns guaranteed



Structure of Polyethylene glycol

### SupraWAX-280 Equivalent Phase

**Supelco:** Supelcowax™ 10

**Restek:** Stabilwax