

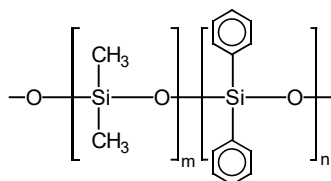


# Teknokroma Capillary Columns

## TRB-5

**95% Dimethyl- 5% diphenylpolysiloxane, bonded and crosslinked phase.**

- It is the most versatile and universal stationary phase in the gas chromatography analysis field
- The low percentage of phenyl in the polymer structure gives it a characteristic affinity towards the compounds with aromatic rings. This phase, the most popular one, due to its great thermal stability and chemical inertness is the stationary phase of choice for any type of analysis
- It allows the analysis of acidic and basic compounds
- It is ideal for the analysis in the environmental field. Analysis of dioxines, PCB's, PCT's, polyaromatic compounds, phenols, herbicides, organochlorinated and organophosphorus pesticides, aromatic hydrocarbons, solvents, drugs, oils, etc...



Structure of Poly (dimethyldiphenyl) siloxane

### TRB-5 Equivalent Phase

**Restek:** Rtx-5

**Agilent/JW:** HP-5, Ultra-2, DB-5, DB-5.625, CP-SIL8CB

**Supelco:** SPB-5, PTE-5, SAC-5, Equity-5

**Machery-Nagel:** OPTIMA-5

**Quadrex:** 007-2

**Phenomenex:** ZB-5

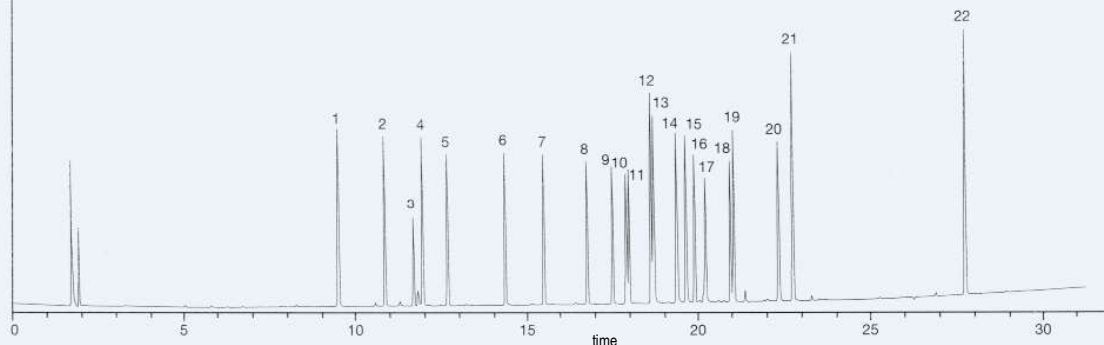
**SGE:** BP-5

### TRB-5 CHLORINATED PESTICIDES

Column: **TRB-5**, P/N TR-120232 30 m x 0.25 mm x 0.25  $\mu$ m  
Injection: 1  $\mu$ L chlorinated pesticides mixture, splitless @ 230°C (25-270 ppb on column)  
Oven: 150°C to 225°C (10 min.) @ 2°C/min  
Carrier gas: H<sub>2</sub>, ct pressure 12 psi (87.7 kPa) 150°C  
Detector: ECD, 310°C

#### Peak Name

1	2,4,5,6-Tetrachloro- <i>m</i> -xylene	12	4,4'- DDE
2	$\gamma$ -BHC	13	Dieldrin
3	$\delta$ -BHC	14	Endrin
4	Heptachlor	15	4,4'- DDD
5	Aldrin	16	Endosulfan II
6	$\beta$ -BHC	17	4,4'- DDT
7	$\delta$ -BHC	18	Endrin aldehyde
8	Heptachlor epoxide	19	Endosulfan sulfate
9	Endosulfan I	20	Methoxychlor
10	$\gamma$ -Chlordane	21	Endrin ketone
11	$\alpha$ -Chlordane	22	Decachlorobiphenyl



TKG 1109

# Teknokroma Capillary Columns



## TRB-5

InternalLength	Film		Temp	Part.	
	Diam.(mm)	Thickness (µm)			
<b>0,10</b>	10	0,10	-60 to 325/350	<b>TR-120141</b>	
	10	0,17	-60 to 320/350	<b>TR-121941</b>	
	10	0,33	-60 to 320/350	<b>TR-123341</b>	
	10	0,40	-60 to 320/350	<b>TR-120441</b>	
	20	0,10	-60 to 325/350	<b>TR-120181</b>	
	20	0,40	-60 to 320/350	<b>TR-120481</b>	
<b>0,18</b>	10	0,18	-60 to 325/350	<b>TR-120944</b>	
	10	0,40	-60 to 325/350	<b>TR-120444</b>	
	20	0,18	-60 to 325/350	<b>TR-120984</b>	
	20	0,40	-60 to 325/350	<b>TR-120484</b>	
	40	0,18	-60 to 325/350	<b>TR-1209C4</b>	
<b>0,20</b>	12	0,18	-60 to 325/350	<b>TR-1233B9</b>	
	15	0,15	-60 to 325/350	<b>TR-121319</b>	
	15	0,35	-60 to 325/350	<b>TR-120319</b>	
	15	0,50	-60 to 325/350	<b>TR-120519</b>	
	25	0,15	-60 to 325/350	<b>TR-121329</b>	
	25	0,33	-60 to 325/350	<b>TR-123329</b>	
	25	0,35	-60 to 325/350	<b>TR-120329</b>	
	25	0,50	-60 to 325/350	<b>TR-120529</b>	
	30	0,15	-60 to 325/350	<b>TR-121339</b>	
	30	0,35	-60 to 325/350	<b>TR-120339</b>	
	30	0,50	-60 to 325/350	<b>TR-120539</b>	
	50	0,15	-60 to 325/350	<b>TR-121359</b>	
	50	0,33	-60 to 325/350	<b>TR-123359</b>	
	50	0,35	-60 to 325/350	<b>TR-120359</b>	
	50	0,50	-60 to 325/350	<b>TR-120559</b>	
	60	0,15	-60 to 325/350	<b>TR-121369</b>	
	60	0,35	-60 to 325/350	<b>TR-120369</b>	
	60	0,50	-60 to 325/350	<b>TR-120569</b>	
	<b>0,25</b>	15	0,10	-60 to 325/350	<b>TR-120112</b>
		15	0,25	-60 to 325/350	<b>TR-120212</b>
15		0,50	-60 to 325/350	<b>TR-120512</b>	
15		1,00	-60 to 320/350	<b>TR-121012</b>	
25		0,10	-60 to 325/350	<b>TR-120122</b>	
25		0,25	-60 to 325/350	<b>TR-120222</b>	
25		0,50	-60 to 325/350	<b>TR-120522</b>	
25		1,00	-60 to 320/350	<b>TR-121022</b>	
30		0,10	-60 to 325/350	<b>TR-120132</b>	
30		0,25	-60 to 325/350	<b>TR-120232</b>	
30		0,50	-60 to 325/350	<b>TR-120532</b>	
30		1,00	-60 to 320/350	<b>TR-121032</b>	
50		0,10	-60 to 325/350	<b>TR-120152</b>	
50		0,25	-60 to 325/350	<b>TR-120252</b>	
50		0,50	-60 to 325/350	<b>TR-120552</b>	
50		1,00	-60 to 320/350	<b>TR-121052</b>	
60		0,10	-60 to 325/350	<b>TR-120162</b>	
60		0,25	-60 to 325/350	<b>TR-120262</b>	
60		0,50	-60 to 325/350	<b>TR-120562</b>	
60		1,00	-60 to 325/350	<b>TR-121062</b>	
<b>0,32</b>	15	0,10	-60 to 325/350	<b>TR-120113</b>	
	15	0,25	-60 to 325/350	<b>TR-120213</b>	

## TRB-5

InternalLength	Film		Temp	Part.
	Diam.(mm)	Thickness (µm)		
<b>0,32</b>	15	0,50	-60 to 325/350	<b>TR-120513</b>
	15	1,00	-60 to 325/350	<b>TR-121013</b>
	15	3,00	-60 to 280/350	<b>TR-123013</b>
	25	0,10	-60 to 325/350	<b>TR-120123</b>
	25	0,25	-60 to 325/350	<b>TR-120223</b>
	25	0,50	-60 to 325/350	<b>TR-120523</b>
	25	1,00	-60 to 325/350	<b>TR-121023</b>
	25	3,00	-60 to 280/350	<b>TR-123023</b>
	30	0,10	-60 to 325/350	<b>TR-120133</b>
	30	0,25	-60 to 325/350	<b>TR-120233</b>
	30	0,50	-60 to 325/350	<b>TR-120533</b>
	30	1,00	-60 to 325/350	<b>TR-121033</b>
	30	3,00	-60 to 280/350	<b>TR-123033</b>
	50	0,10	-60 to 325/350	<b>TR-120153</b>
	50	0,25	-60 to 325/350	<b>TR-120253</b>
	50	0,50	-60 to 325/350	<b>TR-120553</b>
	50	1,00	-60 to 325/350	<b>TR-121053</b>
	50	3,00	-60 to 280/350	<b>TR-123053</b>
	60	0,10	-60 to 325/350	<b>TR-120163</b>
	60	0,25	-60 to 325/350	<b>TR-120263</b>
60	0,50	-60 to 325/350	<b>TR-120563</b>	
60	1,00	-60 to 325/350	<b>TR-121063</b>	
60	3,00	-60 to 280/350	<b>TR-123063</b>	
<b>0,53</b>	10	2,65	-60 to 270/290	<b>TR-122645</b>
	15	0,10	-60 to 320/340	<b>TR-120115</b>
	15	0,50	-60 to 320/340	<b>TR-120515</b>
	15	1,50	-60 to 310/330	<b>TR-121515</b>
	15	3,00	-60 to 270/290	<b>TR-123015</b>
	15	5,00	-60 to 270/290	<b>TR-125015</b>
	25	0,10	-60 to 320/340	<b>TR-120125</b>
	25	0,50	-60 to 320/340	<b>TR-120525</b>
	25	1,50	-60 to 310/330	<b>TR-121525</b>
	25	3,00	-60 to 270/290	<b>TR-123025</b>
	25	5,00	-60 to 270/290	<b>TR-125025</b>
	30	0,10	-60 to 320/340	<b>TR-120135</b>
	30	0,50	-60 to 320/340	<b>TR-120535</b>
	30	0,88	-60 to 310/330	<b>TR-120835</b>
	30	1,50	-60 to 310/330	<b>TR-121535</b>
	30	2,65	-60 to 270/290	<b>TR-122635</b>
	30	3,00	-60 to 270/290	<b>TR-123035</b>
	30	5,00	-60 to 270/290	<b>TR-125035</b>
	50	0,10	-60 to 320/340	<b>TR-120155</b>
	50	0,50	-60 to 320/340	<b>TR-120555</b>
50	1,50	-60 to 310/330	<b>TR-121555</b>	
50	3,00	-60 to 270/290	<b>TR-123055</b>	
50	5,00	-60 to 270/290	<b>TR-125055</b>	
60	0,10	-60 to 320/340	<b>TR-120165</b>	
60	0,50	-60 to 320/340	<b>TR-120565</b>	
60	1,50	-60 to 310/330	<b>TR-121565</b>	
60	3,00	-60 to 270/290	<b>TR-123065</b>	
60	5,00	-60 to 270/290	<b>TR-125065</b>	