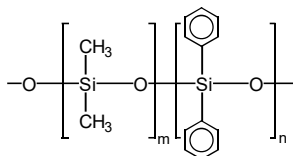


TRB-14

14% Diphenyl - 86% dimethyl polysiloxane, bonded and crosslinked phase.

- 14% Diphenyl - 86% dimethyl polysiloxane
- Column of intermediate polarity without cyanopropyl groups in its structure
- Chemical inertness and low bleed guaranteed
- Confirmation column alongside TRB-1 and TRB-5



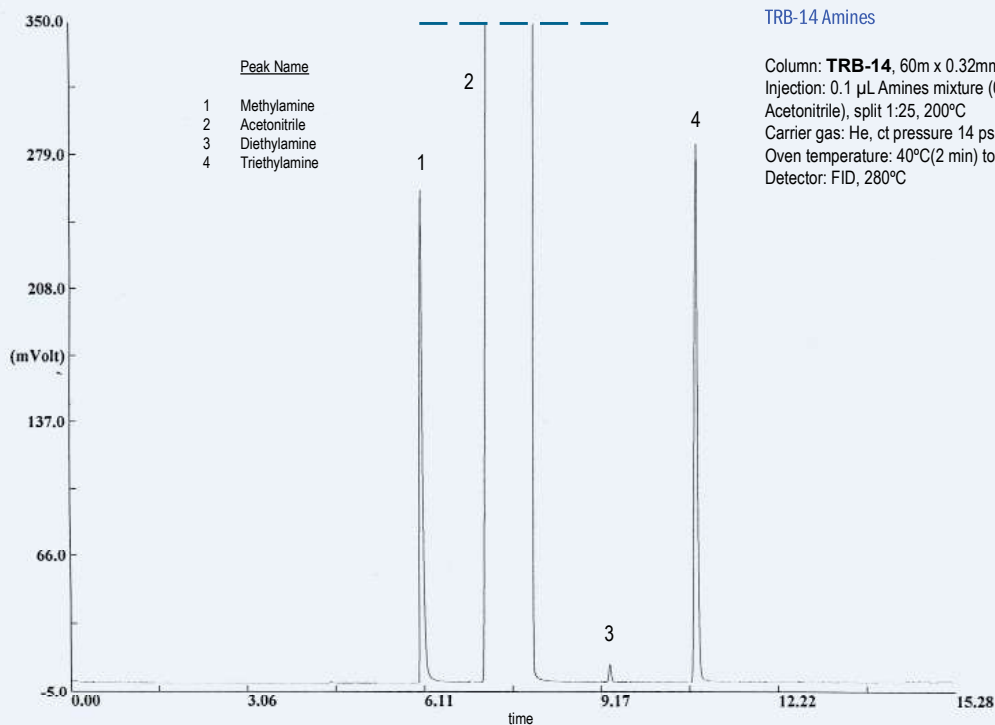
Structure of Poly (dimethyldiphenyl) siloxane

TRB-14 Equivalent Phase

Agilent: CP-SIL 13 CB

TRB-14

Internal Diam. (mm)	Length (m)	Film Thickness (µm)	Temp limits (°C)	Part.
				N°. (P/N)
0,25	15	0,20	-20 to 300/330	TR-802112
	15	0,40	-20 to 300/330	TR-800412
	15	1,20	-20 to 300/330	TR-801212
	30	0,20	-20 to 300/330	TR-802132
	30	0,40	-20 to 300/330	TR-800432
	30	1,20	-20 to 300/330	TR-801232
	60	0,20	-20 to 300/330	TR-802162
	60	0,40	-20 to 300/330	TR-800462
	60	1,20	-20 to 300/330	TR-801262
0,32	15	0,20	-20 to 300/330	TR-802113
	15	0,40	-20 to 300/330	TR-800413
	15	1,20	-20 to 300/330	TR-801213
	30	0,20	-20 to 300/330	TR-802133
	30	0,40	-20 to 300/330	TR-800433
	30	1,20	-20 to 300/330	TR-801233
	60	0,20	-20 to 300/330	TR-802163
	60	0,40	-20 to 300/330	TR-800463
	60	1,20	-20 to 300/330	TR-801263
0,53	15	1,00	-20 to 300/330	TR-801015
	15	2,00	-20 to 300/330	TR-802015
	30	1,00	-20 to 300/330	TR-801035
	30	2,00	-20 to 300/330	TR-802035
	60	1,00	-20 to 300/330	TR-801065
	60	2,00	-20 to 300/330	TR-802065



TKG 1123