

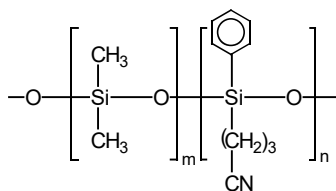


Teknokroma Capillary Columns

TRB-1301

94% Dimethyl- 6% cyanopropyl-phenyl polysiloxane, bonded and crosslinked phase.

- 6% Cyanopropyl-phenyl- 94% dimethyl polysiloxane
- Ideal column for analyzing mixtures of acidic and basic compounds with a wide range of polarity
- Intermediate polarity column is very useful for analyzing pesticides and herbicides



Structure of Poly (dimethylcyanopropylphenyl) siloxane

TRB-1301

Internal Diam. (mm)	Length (m)	Film Thickness (µm)	Temp	Part.	
			limits (°C)	N°. (P/N)	
0,18	10	0,40	-20 to 280/300	TR-640444	
	0,25	15	0,25	-20 to 280/300	TR-640212
		15	1,00	-20 to 260/280	TR-641012
0,25	30	0,25	-20 to 280/300	TR-640232	
	30	1,00	-20 to 260/280	TR-641032	
	60	0,25	-20 to 280/300	TR-640262	
	60	1,00	-20 to 260/280	TR-641062	
	0,32	15	0,25	-20 to 280/300	TR-640213
		15	1,00	-20 to 260/280	TR-641013
30		0,25	-20 to 280/300	TR-640233	
0,32	30	1,00	-20 to 260/280	TR-641033	
	60	0,25	-20 to 280/300	TR-640263	
	60	1,00	-20 to 260/280	TR-641063	
	0,53	15	1,00	-20 to 260/280	TR-641015
		30	1,00	-20 to 260/280	TR-641035
		60	1,00	-20 to 260/280	TR-641065

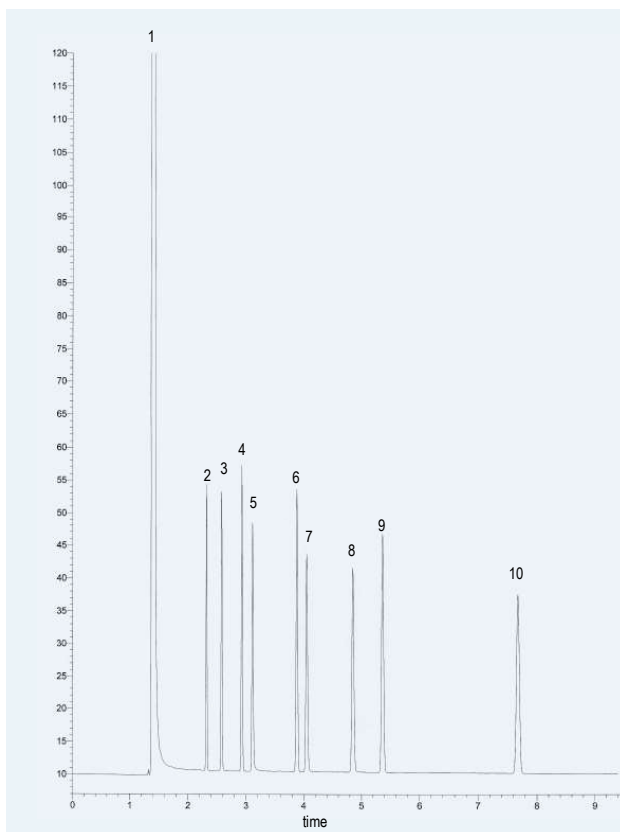
TRB-1301 Equivalent Phase

Agilent: HP-1301, HP-624, DB-1301, DB-624

Supelco: SPB-1301, OVI-G43

Restek: Rtx-1301, Rtx-624

SGE: BPX-624



TRB-1301 Test

Column: **TRB-1301**, 30 m x 0.25 mm x 1.0 µm, P/N TR-641032
 Injection: 0.5 µL standard SP-4-7301 (500 ng/mL), split 1:50, 260 °C
 Carrier gas: H₂, ct pressure 12 psi (82.7 kPa)
 Oven: 165°C
 Detector: FID, 280 °C

Peak Name

- 1 Methylene chloride
- 2 C-10
- 3 2-Octanone
- 4 C-11
- 5 1-Octanol
- 6 C-12
- 7 2,6-Dimethylphenol
- 8 2,6-Dimethylaniline
- 9 C-13
- 10 C-14

TKG 1118