

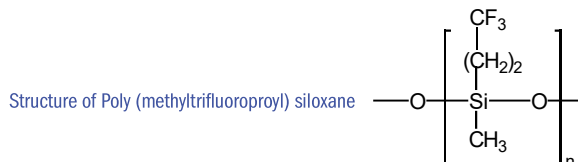


Teknokroma Capillary Columns

TRB-F50

50% Trifluoropropyl- 50% Methyl polysiloxane, bonded and crosslinked phase.

- 50% Trifluoropropyl- 50% methyl polysiloxane
- High polarity column
- Column designed for the EPA 609 and 8140 methods



TRB-F50 Equivalent Phase

Agilent: DB-210, DB-200

Restek: Rtx-200

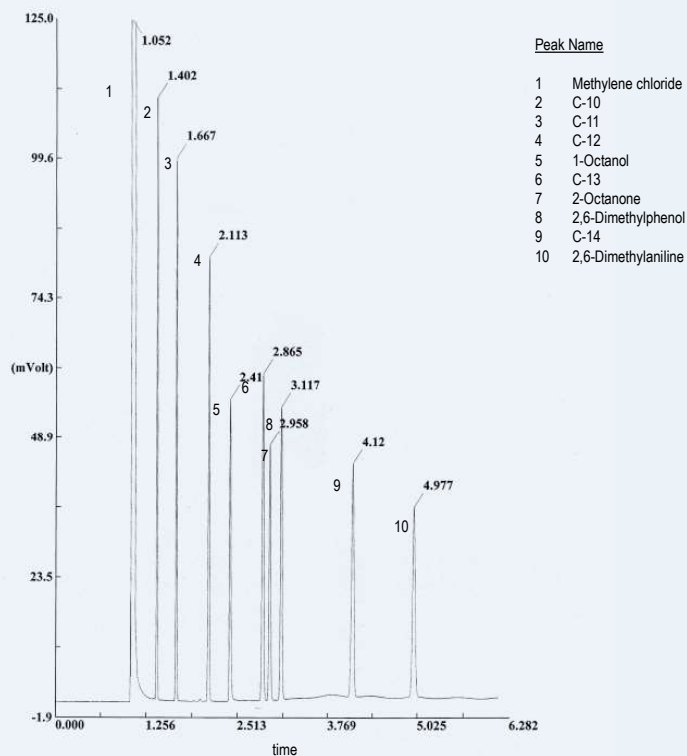
Quadrex: 007-210

TRB-F50

Internal Diam. (mm)	Length (m)	Film Thickness (µm)	Temp limits (°C)	Part. N°. (P/N)
0,18	20	0,20	45 to 240/260	TR-572184
0,25	15	0,15	45 to 240/260	TR-571312
	15	0,25	45 to 240/260	TR-570212
	15	0,50	45 to 240/260	TR-570512
30	0,15	45 to 240/260	TR-571332	
	0,25	45 to 240/260	TR-570232	
	0,50	45 to 240/260	TR-570532	
0,32	15	0,15	45 to 240/260	TR-571313
	15	0,25	45 to 240/260	TR-570213
	15	0,50	45 to 240/260	TR-570513
30	0,15	45 to 240/260	TR-571333	
	0,25	45 to 240/260	TR-570233	
	0,50	45 to 240/260	TR-570533	
0,53	15	1,00	45 to 220/240	TR-571015
	30	1,00	45 to 220/240	TR-571035

TRB-F50 Test

Column: **TRB-F50**, 30 m x 0.32 mm x 0.5 µm, P/N TR-570533
 Injection: 1 µL standard SP-4-7301 (500 ng/mL comp), split 1:50, 260 °C
 Carrier gas: H₂, ct pressure, 7psi (48.2 kPa)
 Oven: 100 °C
 Detector: FID, 280°C



TKG 1129