

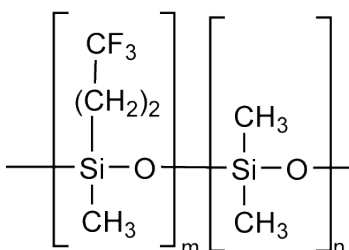


SAPIENS-200

SAPIENS-200

35% Trifluoropropyl-methyl polysiloxane, bonded and cross-linked phase

- Intermediate polarity
- Unique selectivity based on the high electron acceptance of fluorine atoms
- Column of choice for the separation of compounds with electron-donor groups such as ketones, esters, nitriles, secondary and tertiary amines, nitro and chlorinated compounds, PAHs, CFCs and silanes
- Low bleed, ideal for NPD, ECD and MS detectors
- Meets specifications of USP G6



Structure of Poly (dimethyltrifluoropropylmethyl) siloxane

SAPIENS-200 Equivalent Phase

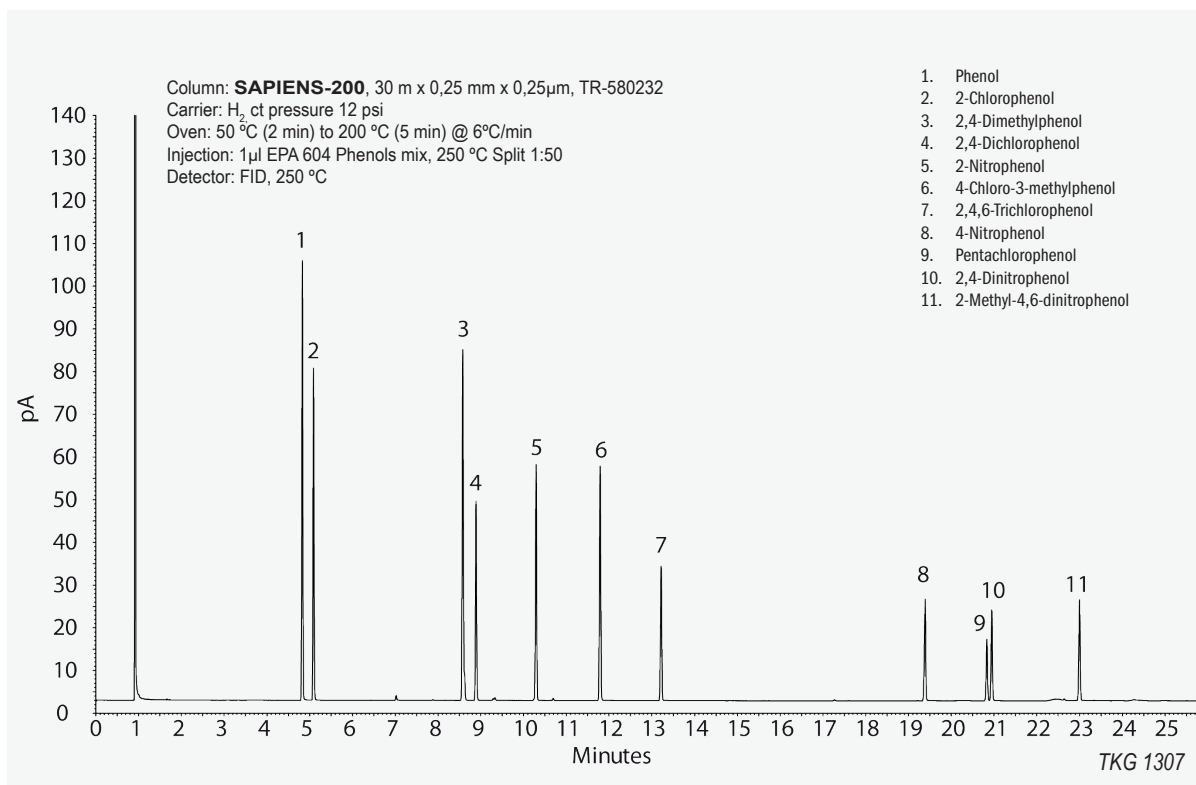
Agilent: DB-200

Restek: Rtx-200

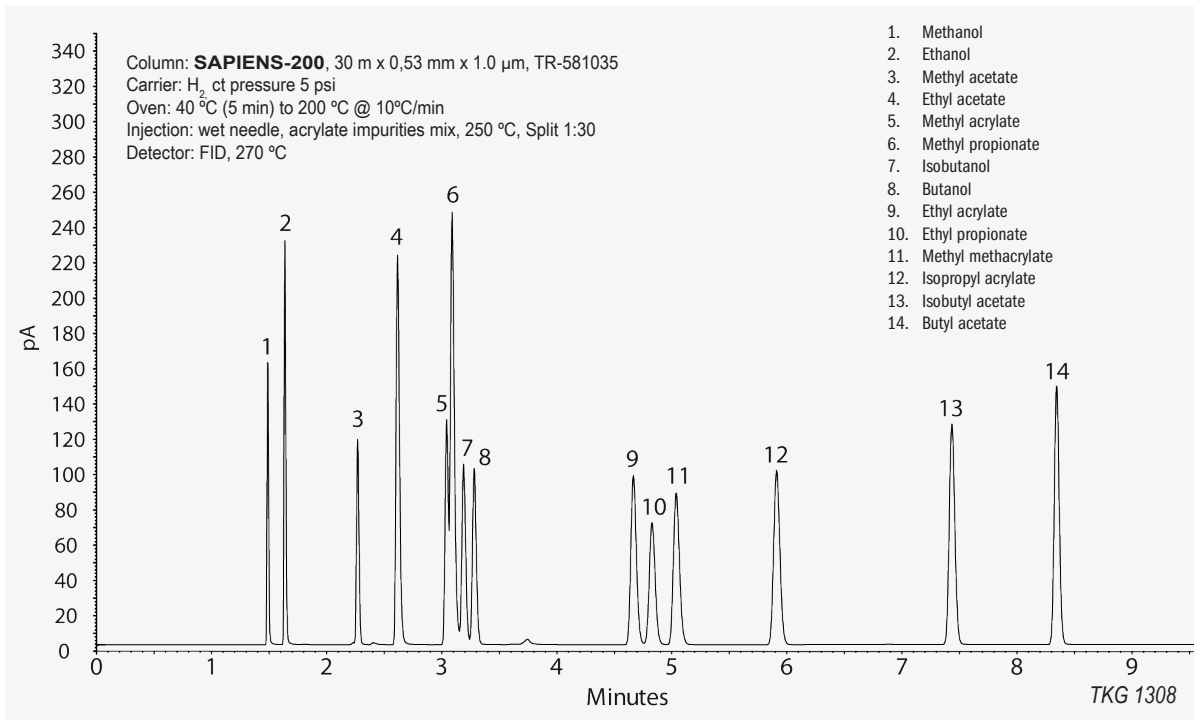
SAPIENS-200

Internal Diam. (mm)	Length (m)	Film Thickness (µm)	Temp limits (°C)	Part. N° (P/N)
0,25	15	0,25	30 to 300/320	TR-580212
	30	0,25	30 to 300/320	TR-580232
	60	0,25	30 to 300/320	TR-580262
	30	0,50	30 to 300/320	TR-580532
	60	0,50	30 to 300/320	TR-580562
	30	1,00	30 to 280/300	TR-581032
	60	1,00	30 to 280/300	TR-581062
0,32	30	0,25	30 to 300/320	TR-580233
	60	0,25	30 to 300/320	TR-580263
	30	0,50	30 to 300/320	TR-580533
	60	0,50	30 to 300/320	TR-580563
	30	1,00	30 to 280/300	TR-581033
	60	1,00	30 to 280/300	TR-581063
	30	1,80	30 to 270/300	TR-581833
	60	1,80	30 to 270/300	TR-581863
0,53	30	0,25	30 to 300/320	TR-580235
	60	0,25	30 to 300/320	TR-580265
	30	0,50	30 to 300/320	TR-580535
	60	0,50	30 to 300/320	TR-580565
	30	1,00	30 to 280/300	TR-581035
	60	1,00	30 to 280/300	TR-581065
	60	3,00	30 to 260/280	TR-583065

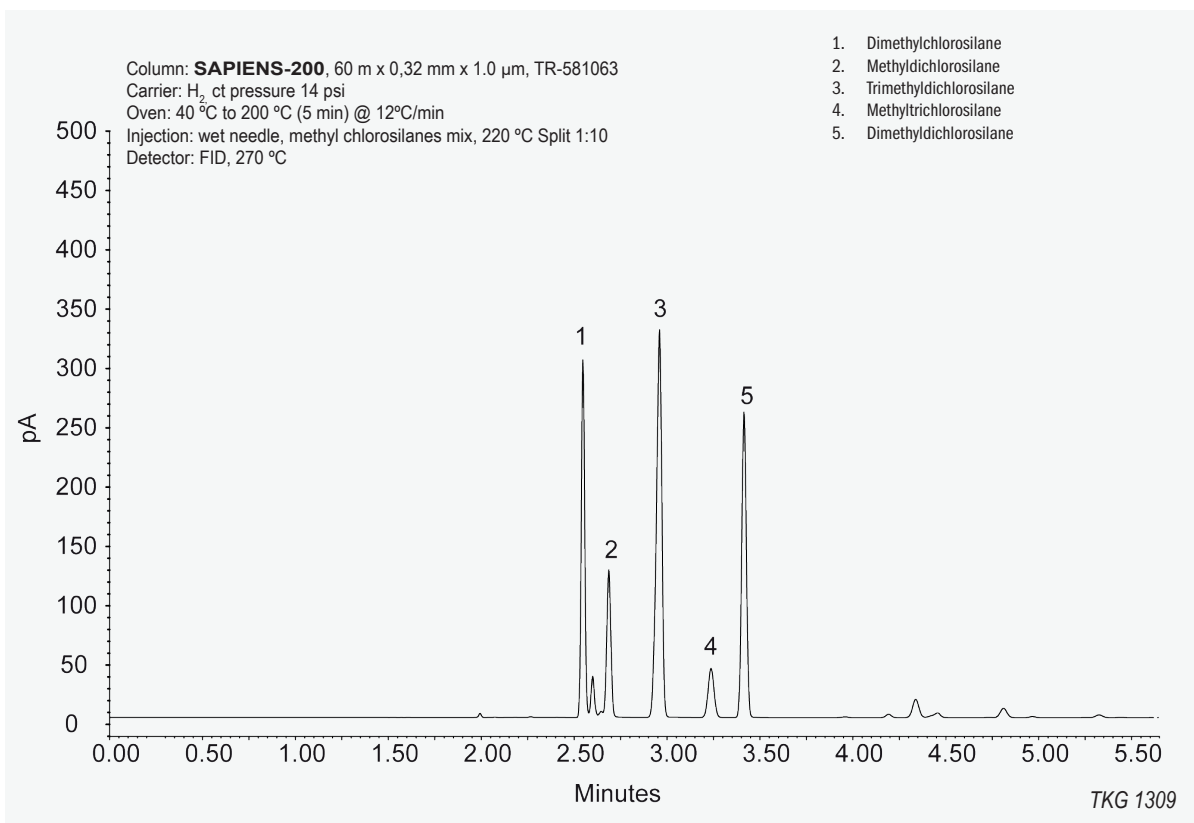
SAPIENS-200: EPA 604 Phenols



SAPIENS-200: Acrylate Impurities



SAPIENS-200: Methyl Chlorosilanes

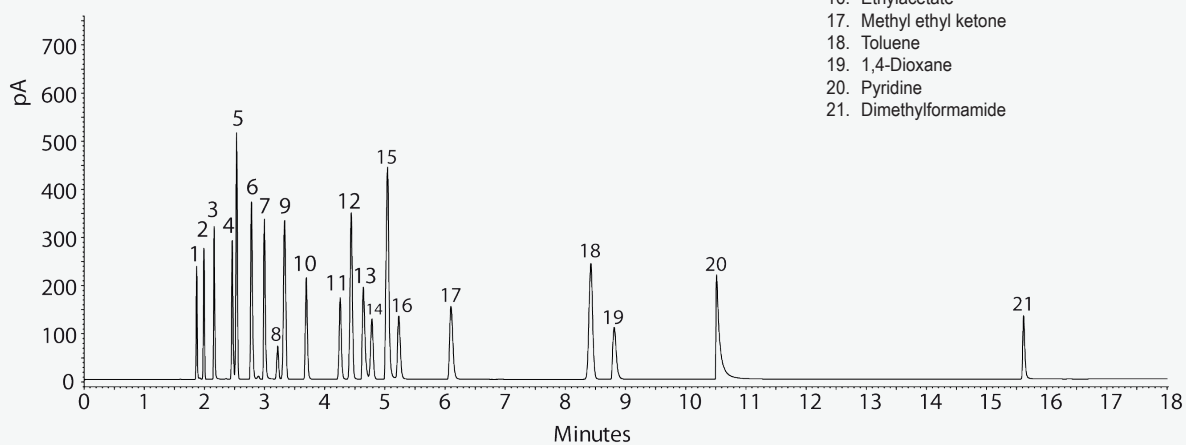




SAPIENS-200: Solvents

Column: **SAPIENS-200**, 30m x 0.32mm x 1.0um, TR-581033
Injection: solvents mix, wet needle, 250°C, split 1:50
Carrier gas: He, ct. pressure 10psi (68.9kPa)
Oven program: 40°C (8min) to 150°C @ 12°C/min
Detector: FID, 300°C

1. Methanol
2. n-Pentane
3. Ethanol
4. Isopropanol
5. Methylene chloride
6. t-Butanol
7. n-Propanol
8. Chloroform
9. Cyclohexane
10. Acetone
11. Acetonitrile
12. Benzene
13. Tetrahydrofuran
14. Trichloroethylene
15. n-Butanol
16. Ethylacetate
17. Methyl ethyl ketone
18. Toluene
19. 1,4-Dioxane
20. Pyridine
21. Dimethylformamide



TKG 1310