

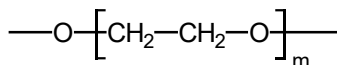


# Teknokroma Capillary Columns

## TR-WAX.DB

### 100% Polyethylene glycol, nonbonded phase.

- 100% basic deactivated Polyethylene glycol (PEG)
- Excellent for analysing basic nonderivatized compounds
- Ideal for separating amines and nitrosamines



Structure of Polyethylene glycol

### TR-WAX.DB Equivalent Phase

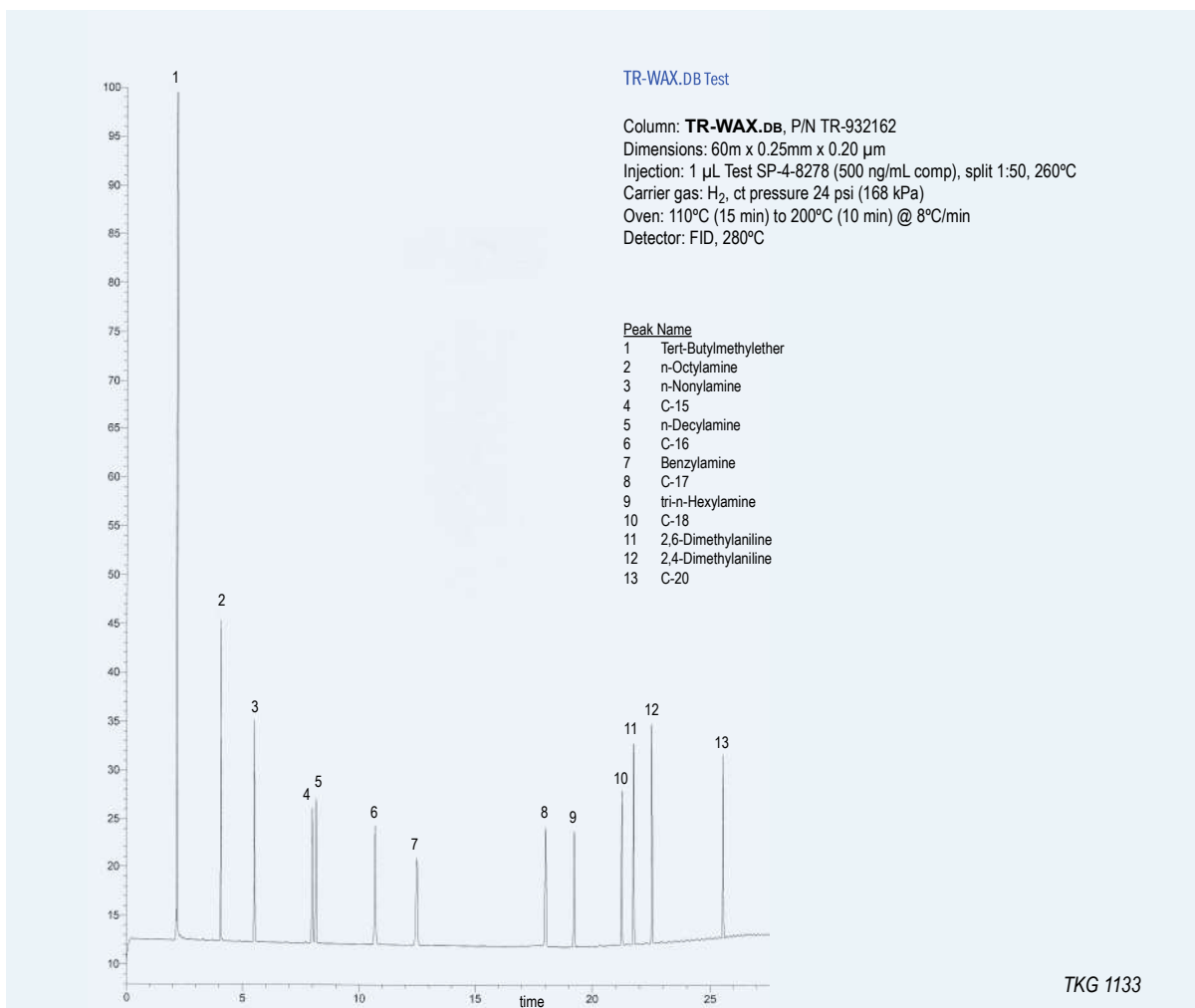
**Agilent:** CAM, HP-BasicWax, CP-WAX 51

**Supelco:** Carbowax-Amine

**Restek:** Stabilwax-DB

## TR-WAX.DB

Internal Diam. (mm)	Length (m)	Film Thickness (µm)	Temp limits (°C)	Part. N° (P/N)
0,25	15	0,20	60 to 210/220	<b>TR-932112</b>
	15	0,25	60 to 210/220	<b>TR-930212</b>
	30	0,20	60 to 210/220	<b>TR-932132</b>
	30	0,25	60 to 210/220	<b>TR-930232</b>
	30	0,50	60 to 210/220	<b>TR-930532</b>
	60	0,20	60 to 210/220	<b>TR-932162</b>
0,32	15	0,25	60 to 210/220	<b>TR-930213</b>
	30	0,25	60 to 210/220	<b>TR-930233</b>
	30	0,50	60 to 210/220	<b>TR-930533</b>
	30	1,00	60 to 210/220	<b>TR-931033</b>
	60	1,00	60 to 210/220	<b>TR-931063</b>
	0,53	15	1,00	60 to 210/220
30		0,50	60 to 210/220	<b>TR-930535</b>
30		1,00	60 to 210/220	<b>TR-931035</b>
30		1,50	60 to 210/220	<b>TR-931535</b>
60		1,00	60 to 210/220	<b>TR-931065</b>



TKG 1133