

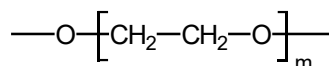


SupraWAX-280

SupraWAX-280

Column totally equivalent to the Supelcowax™-10. Based in the popular phase Carbowax 20M.

- 100 % Polyethylene glycol (PEG), bonded and cross-linked phase
- Column of high polarity
- Phase practically equivalent to the USP G16 phase
- Wide range of operating temperatures and high thermal stability (35°C-280°C)
- Compatible with water and methanol injections, providing that these solvents must be completely vaporized when they enter into the column.
- Reproducibility among columns guaranteed
- Column used for the analysis of methyl esters of fatty acids (FAMES) solvents, fragrances, alcohols and aromatic compounds in the alimentary and flavor and fragrance industry.

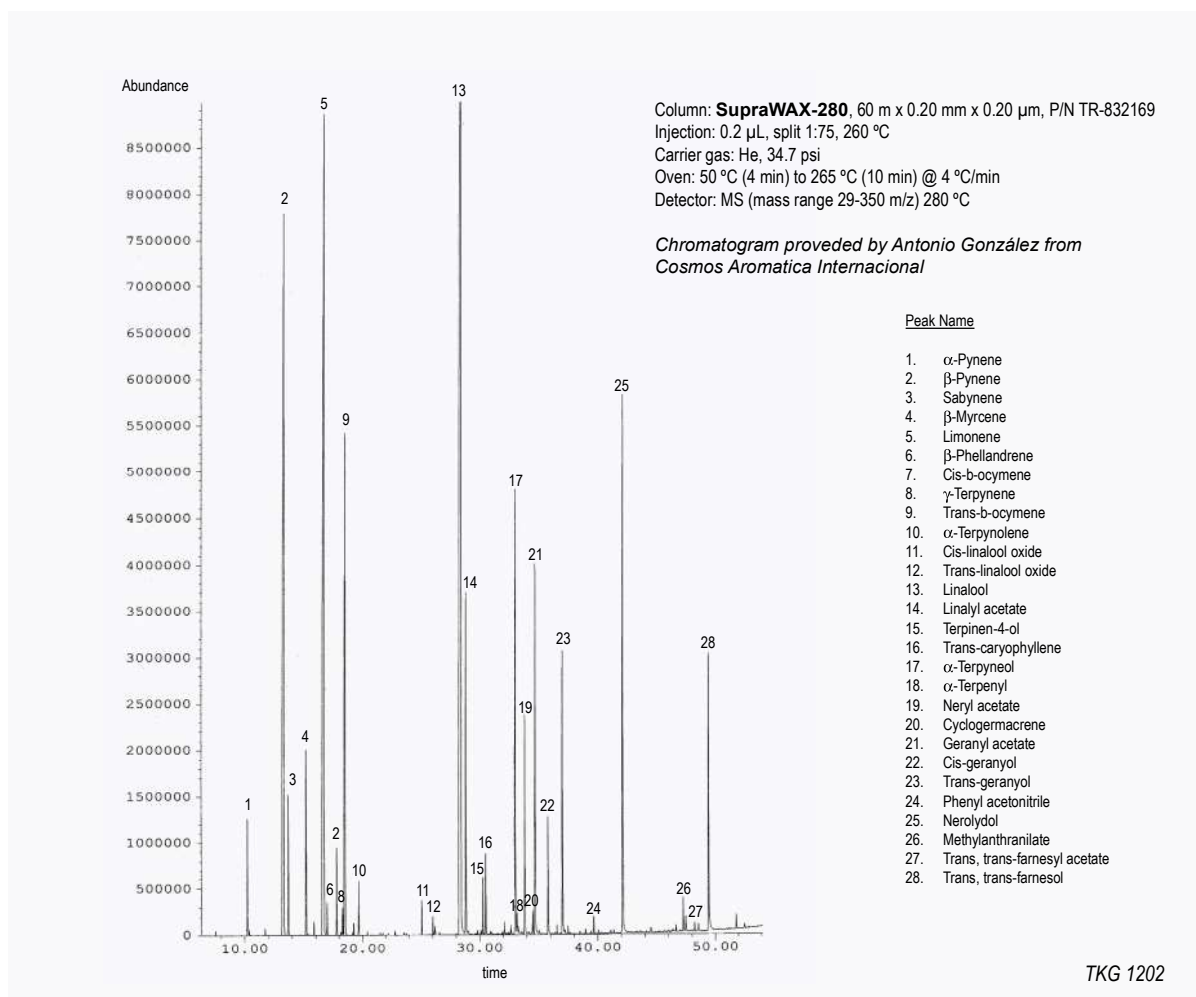


Structure of Polyethylene glycol

SupraWAX-280 Equivalent Phase

Agilent: DB-WAX etr
Supelco: Supelcowax™ 10
SGE: SolGel-WAX

SupraWAX-280: Essential Oil of Flower of Orange Tree (Neroli)





SupraWAX-280

Internal Diam.(mm)	Length (m)	Film Thickness (µm)	Temp limits (°C)	Part. N°. (P/N)	Internal Diam.(mm)	Length (m)	Film Thickness (µm)	Temp limits (°C)	Part. N°. (P/N)
0,10	10	0,10	35 to 280	TR-830141	0,32	15	0,25	35 to 280	TR-830213
	15	0,10	35 to 280	TR-830111		15	0,50	35 to 280	TR-830513
	20	0,10	35 to 280	TR-830181		30	0,25	35 to 280	TR-830233
	20	0,20	35 to 280	TR-832181		30	0,50	35 to 280	TR-830533
	15	0,20	35 to 280	TR-832111		30	1,00	35 to 280	TR-831033
0,18	10	0,18	35 to 280	TR-830944	60	0,25	35 to 280	TR-830263	
	20	0,18	35 to 280	TR-830984	60	0,50	35 to 280	TR-830563	
	20	0,30	35 to 280	TR-832984	60	1,00	35 to 280	TR-831063	
	40	0,30	35 to 280	TR-8329C4	0,53	15	0,50	35 to 280	TR-830515
0,20	30	0,20	35 to 280	TR-832139		15	1,00	35 to 280	TR-831015
	60	0,20	35 to 280	TR-832169		30	0,50	35 to 280	TR-830535
	60	0,40	35 to 280	TR-830469		30	1,00	35 to 280	TR-831035
0,25	15	0,25	35 to 280	TR-830212		30	2,00	35 to 280	TR-832035
	15	0,50	35 to 280	TR-830512	60	1,00	35 to 280	TR-831065	
	30	0,25	35 to 280	TR-830232	60	2,00	35 to 280	TR-832065	
30	0,50	35 to 280	TR-830532						

SupraWAX-280: Food Industry FAME mix (37 compounds)

Column: **SupraWAX-280**, 15 m x 0.10 mm x 0.10 µm, P/N TR-830111
Injection: 0.3 µL Food Industry FAME Mix 10 mg/ml in methylene chloride
280°C, split 200:1, precision liner
Carrier gas: H₂, 45 psi (310.05 kPa)
Oven: 100 °C (0.5 min) to 280 °C (2 min) @ 50 °C/min
Detector: FID, 280 °C

