

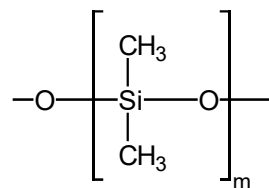


Teknokroma Capillary Columns

TRB-Petro.150

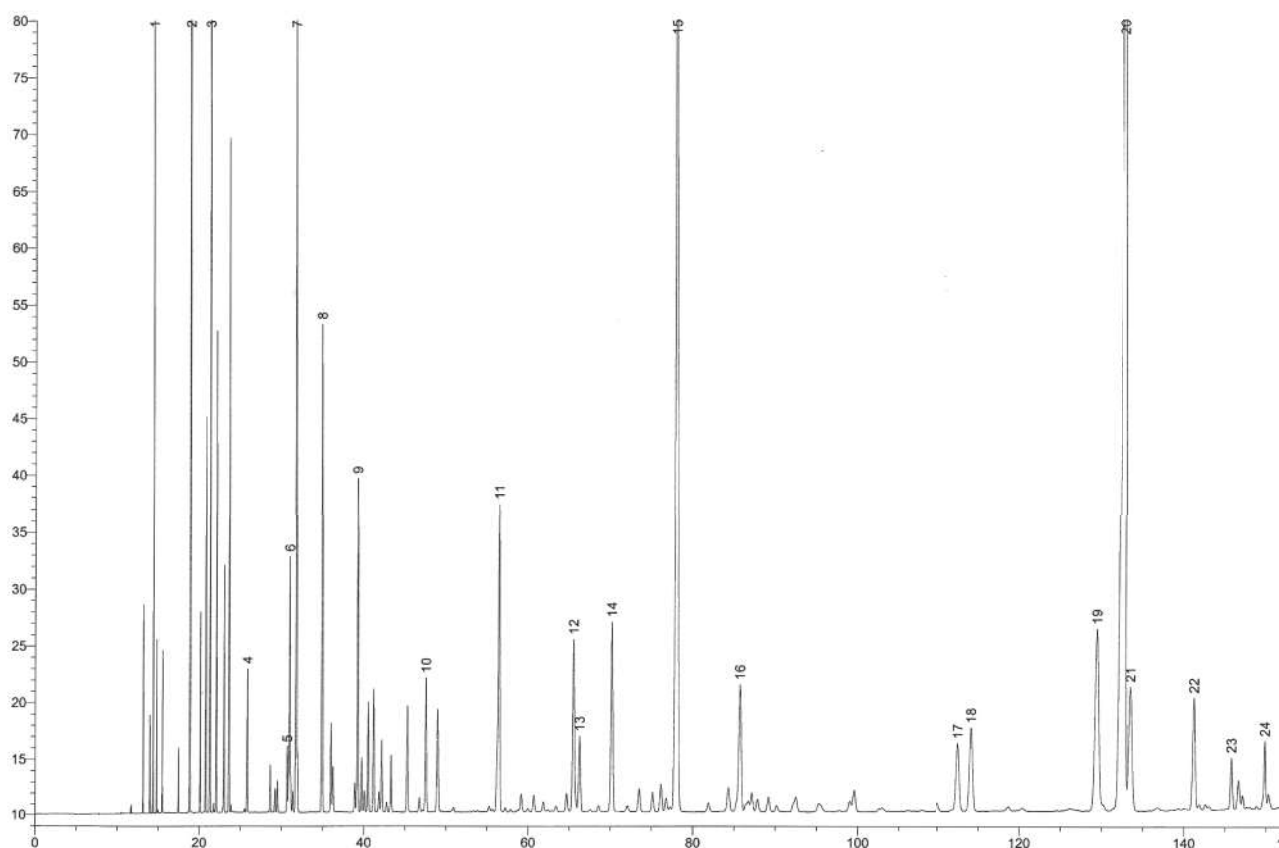
100% Dimethyl polysiloxane, bonded and crosslinked phase.

- 100% Dimethylpolysiloxane
- Maximum resolution for hydrocarbon analysis



Structure of Poly (dimethyl) siloxane

TRB-PETRO.150



- 1 n-Butane
- 2 Isopentane
- 3 n-Pentane
- 4 2,2-Dimethylbutane
- 5 Cyclopentane
- 6 2,3-Dimethylbutane
- 7 2-Methylpentane
- 8 3-Methylpentane
- 9 n-Hexane
- 10 2,4-Dimethylpentane

- 11 Benzene
- 12 2-Methylhexane
- 13 2,3-Dimethylpentane
- 14 3-Methylhexane
- 15 2,2,4-Trimethylpentane
- 16 n-Heptane
- 17 2,5-Dimethylhexane
- 18 2,4-Dimethylhexane
- 19 2,3,4-Trimethylpentane
- 20 Toluene

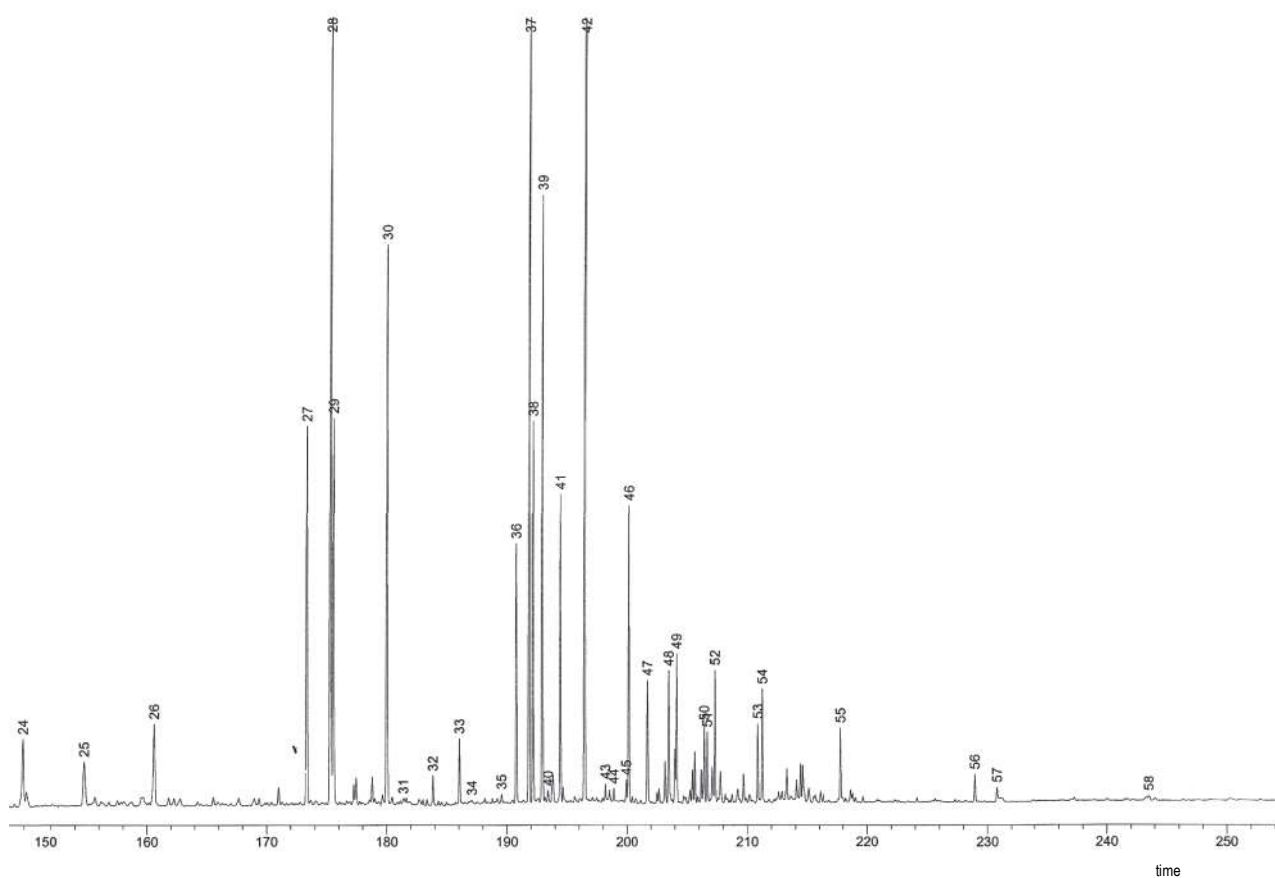
- 21 2,3,3-Trimethylpentane
- 22 2,3-Dimethylhexane
- 23 2-Methylheptane
- 24 3-Methylheptane
- 25 2-Methyl-1-heptene
- 26 n-Octane
- 27 Ethylbenzene
- 28 m-Xylene
- 29 p-Xylene
- 30 o-Xylene

TRB-Petro.150 Equivalent Phase

Supelco: Petrocol DH 150
Restek: Rtx-DHA 150

TRB-Petro.150

InternalLength	Film	Temp	Part.
Diam.(mm) (m)	Thickness (µm)	limits (°C)	N°. (P/N)
0,25 150	1,00	-60 to 300/320	TR-1110G2



- 31 1-Nonene
- 32 n-Nonane
- 33 Isopropylbenzene
- 34 3,3,5- Trimethylheptane
- 35 2,4,5- Trimethylheptane
- 36 n-Propylbenzene
- 37 1-Methyl-3-ethylbenzene
- 38 1-Methyl-4-ethylbenzene
- 39 1,3,5-Trimethylbenzene
- 40 3,3,4- Trimethylheptane

- 41 1-Methyl-2-ethylbenzene
- 42 1,2,4- Trimethylbenzene
- 43 Isobutylbenzene
- 44 sec-Butylbenzene
- 45 n-Decane
- 46 1,2,3- Trimethylbenzene
- 47 Indane
- 48 1,3-Diethylbenzene
- 49 n-Butylbenzene
- 50 1,4-Dimethyl-2-ethylbenzene

- 51 1,3- Dimethyl-4-ethylbenzene
- 52 1,2-Dimethyl-4-ethylbenzene
- 53 1,2,4,5- Tetramethylbenzene
- 54 1,2,3,5-Tetramethylbenzene
- 55 Naphthalene
- 56 2-Methylnaphthalene
- 57 1-Methylnaphthalene
- 58 Dimethylnaphthalenes

TKG 1107