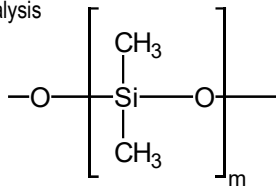




TRB-PETROL

100% Dimethyl polysiloxane, bonded and crosslinked phase.

- 100% Dimethylpolysiloxane
- Column for analyzing complex mixtures of hydrocarbons according to the ASTM regulations (American Society for Testing and Materials)
- Sufficient resolution power to undertake PNA, PONA and PIANO analysis



Structure of Poly (dimethyl) siloxane

TRB-PETROL Equivalent Phase

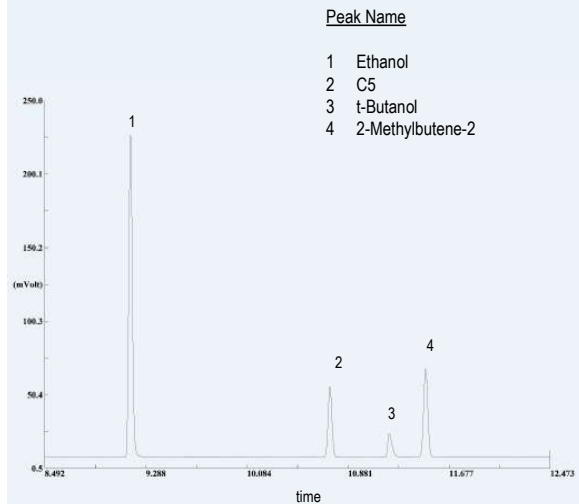
Agilent: DB-Petro
Supelco: Petrocol DH

TRB-PETROL

Internal Diam.(mm)	Length (m)	Film Thickness (µm)	Temp limits (°C)	Part. N°. (P/N)
0,25	100	0,50	-60 to 300/320	TR-110592

TRB-PETROL (PONA column) meets all ASTM specifications

	ASTM D-6730 Specifications
C5 efficiency (total theoretical plates) :618.503	450.000-550.000
K (C5) : 0.47	0.45-0.50
t-Butanol skewness: 1.62	>1.00 - < 5.00
Resolution t-Butanol/2-Methylbutene-2: 4.41	3.25-5.25

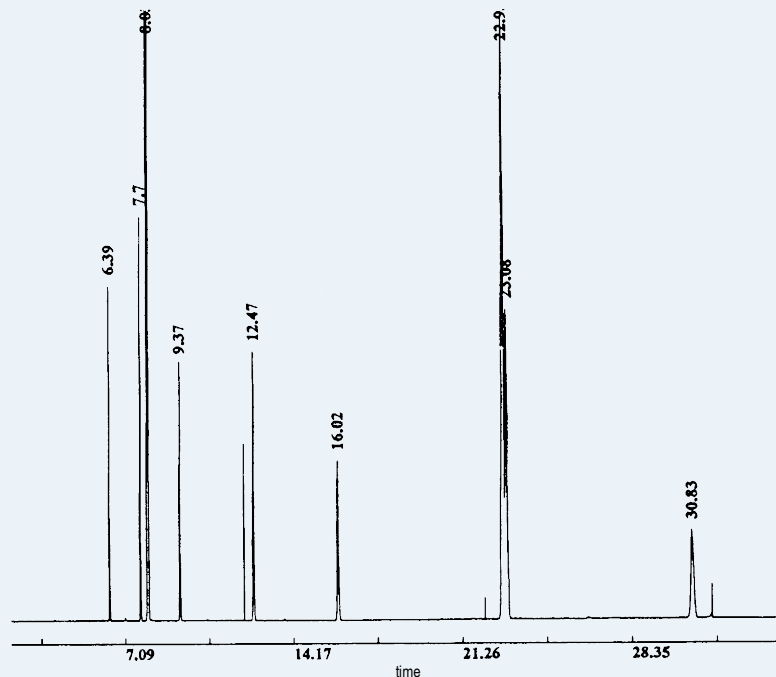


TKG 1254

HYDROCARBONS

Column: **TRB-PETROL**, 100m x 0.25mm x 0.50µm, P/N TR-110592
 Oven: 60°C (isothermal)
 Injector: 260°C
 Carrier gas: H₂, 34 psi
 Injection: Test for hydrocarbons, split (1:100)
 Detector: FID, 260°

tr (min.)	Compound
6.39	n-Hexane
7.70	Benzene
8.03	Cyclohexane
9.37	n-Heptane
12.47	Toluene
16.02	n-Octane
22.93	m-Xylene
23.08	p-Xylene
30.83	n-Nonane



TKG 1106