



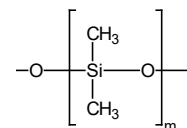
Teknokroma Capillary Columns

TRB-1MS

100% Dimethyl polysiloxane, bonded and crosslinked phase.

- 100% Dimethylpolysiloxane
- These columns gives identical selectivity to the TRB-1, fulfil column bleed specifications that make them compatible with analysis of trace components with GC/MS. Therefore, the standard column of 30 m x 0.25 mm x 0.25 µm has a guaranteed maximum bleed of 4 pA at 325 °C
- Great chemical inertness towards active compounds and excellent thermal stability
- Improved signal/noise ratio, which enables greater sensitivity with MS, ECD, NPD, SCD, etc. detectors and provides greater precision in quantitative analysis at trace levels
- Less column bleed means less detectors contamination and faster conditioning columns

Structure of Poly (dimethyl) siloxane



TRB-1MS Equivalent Phase

Agilent: HP-1MS, DB-1MS, VF-1MS, CP-SIL 5 CB MS

Restek: Rtx-1MS, Rxi-1MS

Phenomenex: ZB-1MS

Macherey-Nagel: OPTIMA-1MS, OPTIMA-1MS Accent

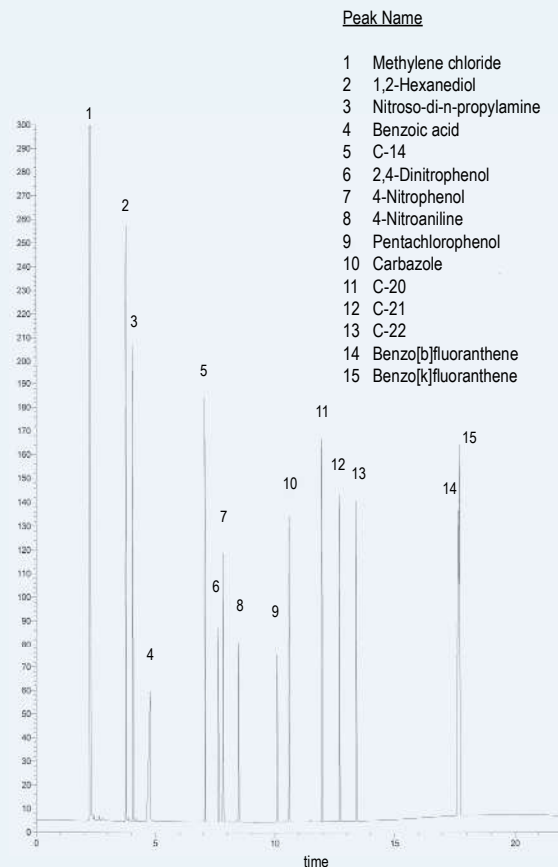
Supelco: EQUITY-1

TRB-1MS

Internal Diam. (mm)	Length (m)	Film Thickness (µm)	Temp limits (°C)	Part. N°. (P/N)
0,10	10	0,10	-60 to 325/350	TR-510141
		0,40	-60 to 325/350	TR-510441
	20	0,10	-60 to 325/350	TR-510181
		0,40	-60 to 325/350	TR-510481
0,18	20	0,18	-60 to 325/350	TR-510984
	40	0,18	-60 to 325/350	TR-5109C4
0,20	12	0,33	-60 to 325/350	TR-5133B9
		0,33	-60 to 325/350	TR-513319
	25	0,33	-60 to 325/350	TR-513329
		0,33	-60 to 325/350	TR-513339
	50	0,33	-60 to 325/350	TR-513359
		0,33	-60 to 325/350	TR-513369
0,25	15	0,10	-60 to 325/350	TR-510112
		0,25	-60 to 325/350	TR-510212
	15	1,00	-60 to 325/350	TR-511012
		30	0,10	-60 to 325/350
	30	0,25	-60 to 325/350	TR-510232
		30	1,00	-60 to 325/350
	60	0,10	-60 to 325/350	TR-510162
		0,25	-60 to 325/350	TR-510262
	60	1,00	-60 to 325/350	TR-511062
		60	1,00	-60 to 325/350
0,32	15	0,10	-60 to 325/350	TR-510113
		0,25	-60 to 325/350	TR-510213
	15	0,50	-60 to 325/350	TR-510513
		1,00	-60 to 325/350	TR-511013
	60	1,00	-60 to 325/350	TR-511062
		30	0,10	-60 to 325/350
0,53	30	0,25	-60 to 325/350	TR-510233
		0,50	-60 to 325/350	TR-510533
	30	1,00	-60 to 325/350	TR-511033
		60	0,10	-60 to 325/350
	60	0,25	-60 to 325/350	TR-510263
		0,50	-60 to 325/350	TR-510563
	60	1,00	-60 to 325/350	TR-511063
		15	0,50	-60 to 320/340
	15	1,00	-60 to 320/340	TR-511015
		15	1,50	-60 to 310/330
30	0,50	-60 to 320/340	TR-510535	
	30	1,00	-60 to 320/340	TR-511035
30	1,50	-60 to 310/330	TR-511535	

TRB-1MS MX5 Test

Column: **TRB-1MS**, 60m x 0.25mm x 0.25µm, P/N TR-510262
 Oven: 100°C to 325 °C (5 min) @ 6°C/min
 Injection: 1µL Test MX5 (10 to 20 ng/comp. on column), split 1:100, 280°C
 Carrier gas: H₂, ct pressure 25 psi (172 kPa).
 Detector: FID, 340 °C



TKG 1104